

**UNDERSEA FEATURE NAME PROPOSAL**

(See **NOTE** overleaf)

Note: The boxes will expand as you fill the form.

<b>Name Proposed:</b>	Chushu Seamount	<b>Ocean or Sea:</b>	West Pacific Ocean
-----------------------	-----------------	----------------------	--------------------

Geometry that best defines the feature (Yes/no):						
Point	Line	Polygon	Multiple points	Multiple lines*	Multiple polygons*	Combination of geometries*
		Yes				

\* Geometry should be clearly distinguished when providing the coordinates below.

Coordinates:	Lat. (e.g. 63°32.6'N)	Long. (e.g. 046°21.3'W)
		13 23.0'N (summit)
	13 25.1'N (bottom)	131 21.7'E (bottom)
	13 24.9'N	131 24.0'E
	13 24.4'N	131 24.9'E
	13 22.9'N	131 25.8'E
	13 22.4'N	131 26.3'E
	13 21.0'N	131 26.9'E
	13 19.7'N	131 28.3'E
	13 19.5'N	131 28.3'E
	13 19.7'N	131 26.1'E
	13 19.5'N	131 25.5'E
	13 19.3'N	131 25.5'E
	13 18.9'N	131 26.1'E
	13 18.6'N	131 25.4'E
	13 18.8'N	131 23.4'E
	13 18.7'N	131 22.5'E
	13 19.2'N	131 22.2'E
	13 19.4'N	131 21.7'E
	13 18.8'N	131 21.0'E
	13 18.6'N	131 20.4'E
	13 19.0'N	131 19.8'E
	13 19.4'N	131 18.1'E
	13 20.9'N	131 17.1'E
	13 21.9'N	131 17.1'E
	13 22.6'N	131 17.6'E
	13 22.9'N	131 18.3'E
	13 23.8'N	131 18.5'E
	13 24.1'N	131 19.7'E

	13 °25.1'N (bottom)	131 °21.7'E (bottom)
--	---------------------	----------------------

<b>Feature description:</b>	Maximum Depth:	6580 m	Steepness:	
	Minimum Depth:	5120 m	Shape:	polygon
	Total Relief:	1460 m	Dimension/Size:	12 km × 20 km

<b>Associated Features:</b>	This seamount is located about 255 km west to the Hamuronohoshi Seamount. It has a nearly triangle overlook plane shape.
-----------------------------	--

<b>Chart/Map References:</b>	Shown Named on Chart/Map	
	Shown Unnamed on Chart/Map	GEBSCO 5.07
	Within Area of Chart/Map	

<b>Reason for Choice of Name</b> (if a person, state how associated with the feature to be named):	“Chushu”, the fourteenth term of The 24 Solar Terms and the second autumn solar terms in lunar calendar. The Chinese “24 Solar Terms” is inscribed on the Representative List of the Intangible Cultural Heritage of Humanity of UNESCO on 30 November 2016.
---	--

<b>Discovery Facts:</b>	Discovery Date:	June 2017
	Discoverer(individual, ship):	R/V Xiang Yang Hong No.06

<b>Supporting Survey data, including Track Controls:</b>	Date of survey:	June 2017
	Survey ship:	R/V Xiang Yang Hong No.06
	Sounding Equipment:	EM122
	Type of navigation:	StarFire3050M
	Estimated Horizontal Accuracy:	0.0005nm (1m)
	Distance between survey lines:	10 km
	Supporting material can be submitted as annex in analog or digital form.	

<b>Proposer(s):</b>	Name(s):	Wu Ziyin, Li Shoujun, Zhao Dineng, Ding Weifeng, Zhou Jieqiong
	Date :	20 April 2018
	E-mail:	zywu@vip.163.com
	Organization and address:	Second Institute of Oceanography, SOA, China No.36 Baochubei Road, Hangzhou China 310012
	Concurrer (name, organization, address):	

<b>Remark :</b>	The proposal has been reviewed and approved by Sub-Committee on Undersea Feature Names of China Committee on Geographical Names (CCUFN)
-----------------	---

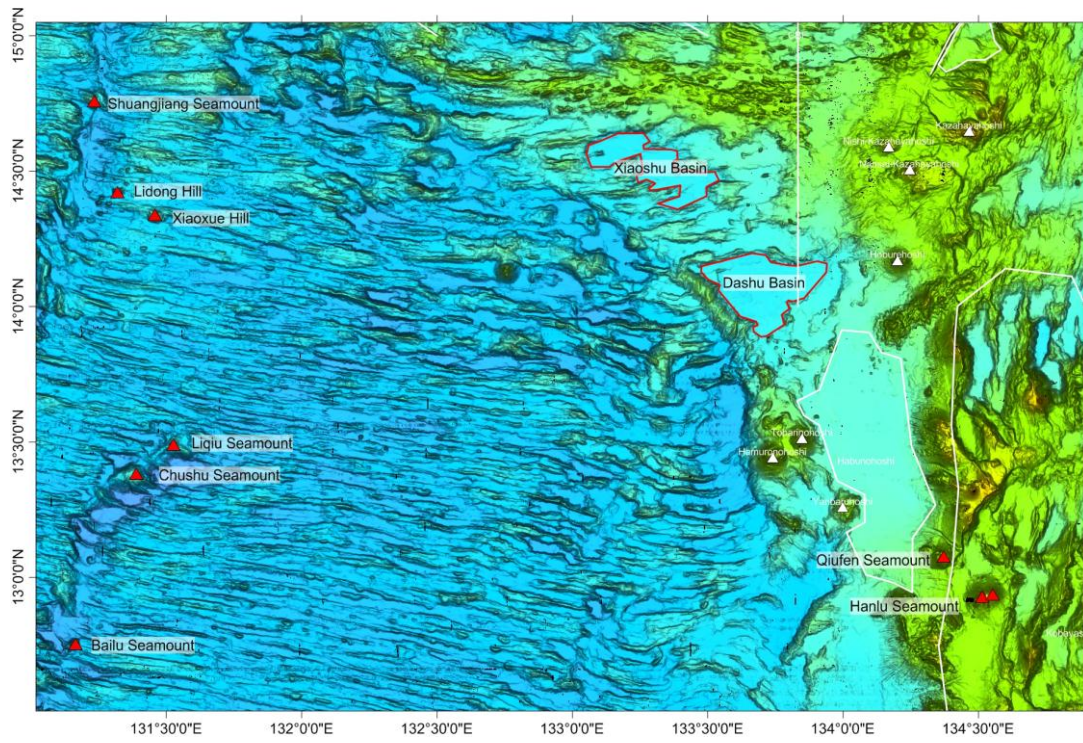
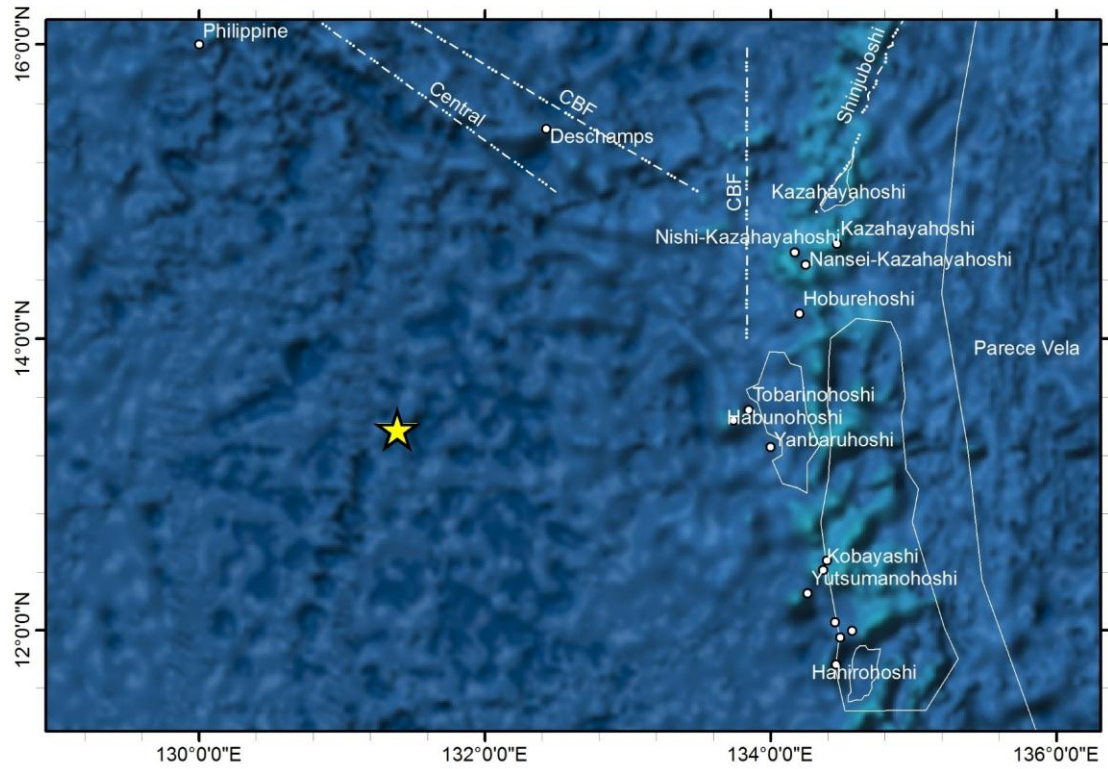
No.1 Fuxingmenwai Ave. Beijing 100860  
heyunxu@sina.com

**Note:** this form should be forwarded, when completed:

- a) **If the undersea feature is located inside the external limit of the territorial sea:** to your “National Authority for Approval of Undersea Feature Names”(see page 2-9) or, if this does exist or is not known, either to the IHB or to the IOC (see address below):
- b) **If at least 50% of the undersea feature is located outside the external limits of the territorial sea:** to the IHB or to the IOC, at the following address:

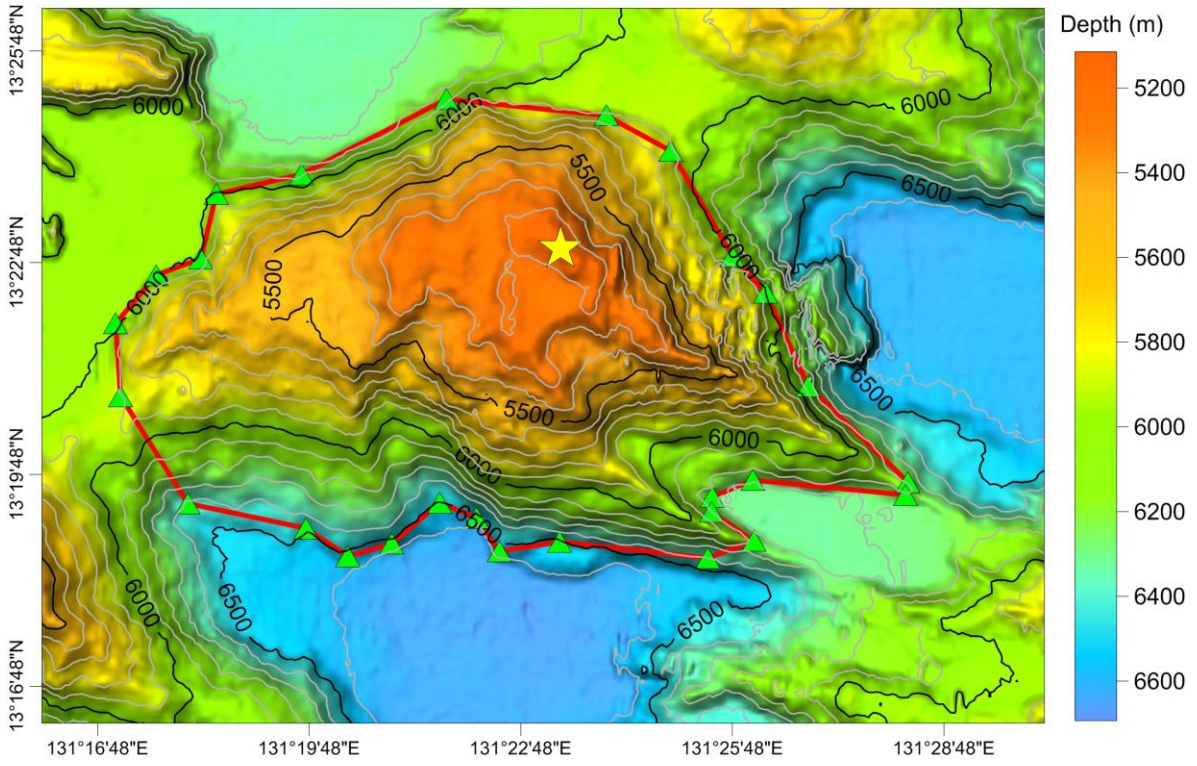
International Hydrographic Bureau (IHB) 4, Quai Antoine 1er B.P. 445 MC 98011 MONACO CEDEX <u>Principality of MONACO</u> Fax: +377 93 10 81 40 E-mail: <a href="mailto:info@ihb.mc">info@ihb.mc</a>	Intergovernmental Oceanographic Commission (IOC) UNESCO Place de Fontenoy 75700 PARIS <u>France</u> Fax: +33 1 45 68 58 12 E-mail: <a href="mailto:info@unesco.org">info@unesco.org</a>
---	---

# Figures

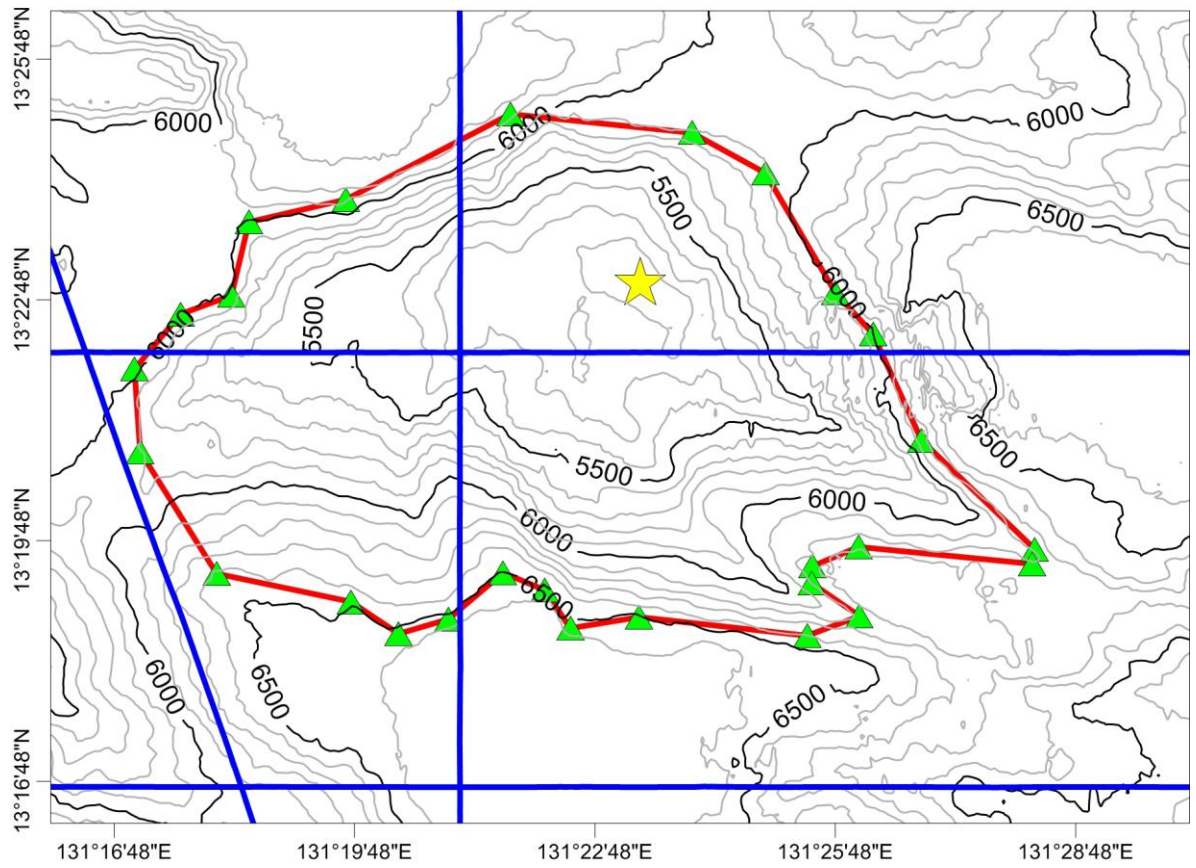


**Fig.1** Index map showing the location of Chushu Seamount

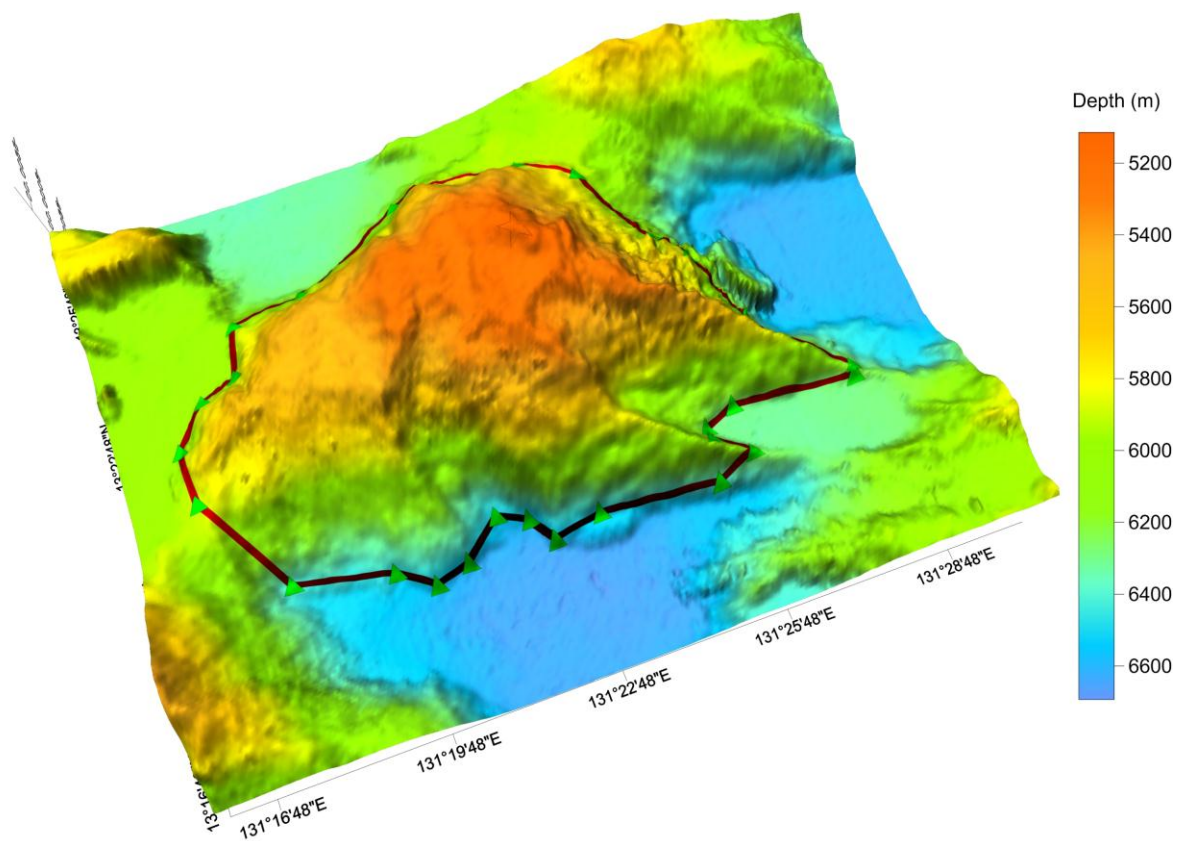




**Fig.2** Bathymetric map of Chushu Seamount  
(Contours are in 100 m)

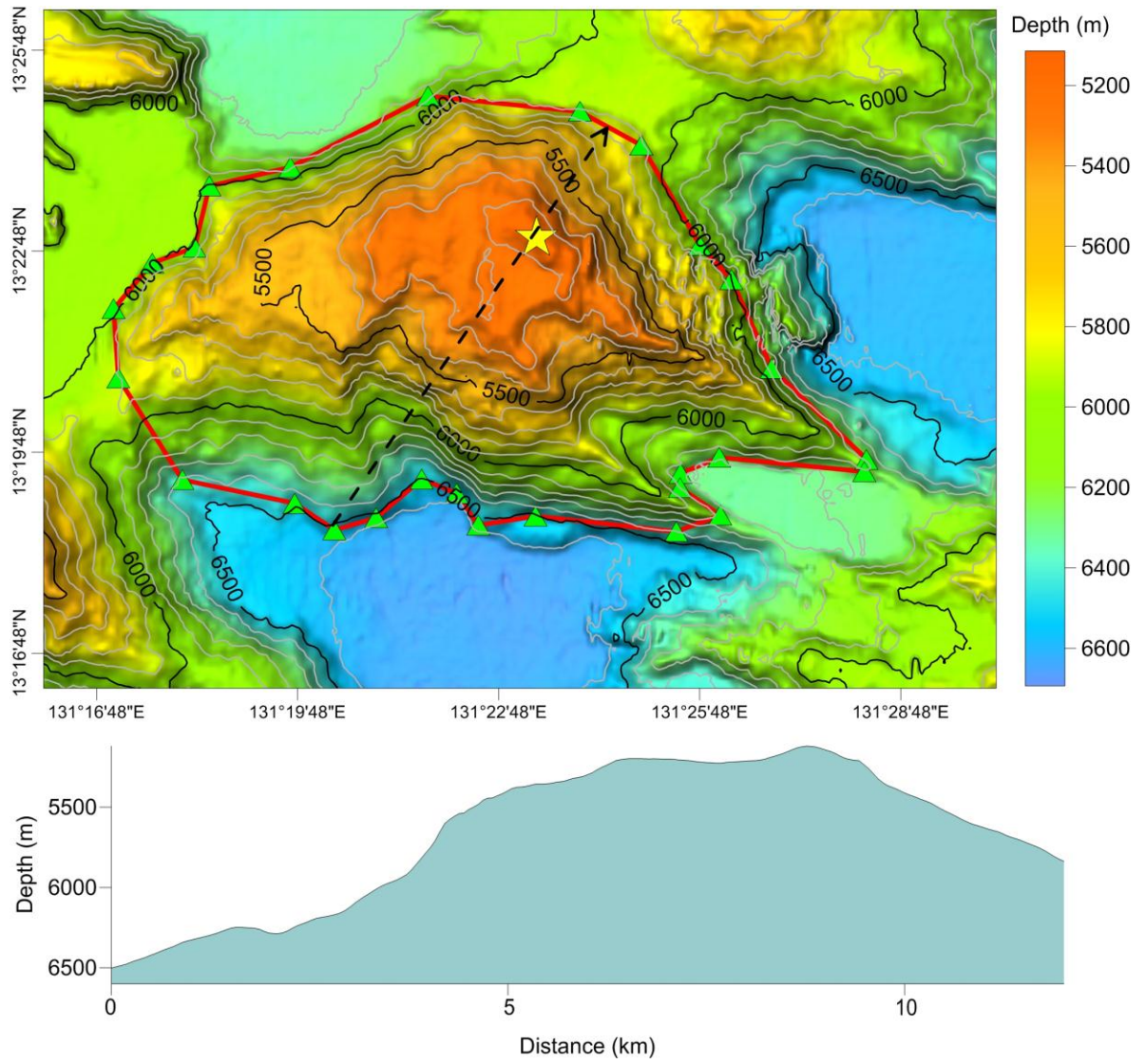


**Fig.3** Bathymetric map of Chushu Seamount, showing track lines  
(Contours are in 100 m, blue lines are survey lines)



**Fig.4** 3-D topography map of Chushu Seamount





**Fig.5** Bathymetric map and profile of Chushu Seamount