

**UNDERSEA FEATURE NAME PROPOSAL**  
(See IHO-IOC Publication B-6 and **NOTE** overleaf)

Note: The boxes will expand as you fill the form.

<b>Name Proposed:</b>	Shenhu Canyons	<b>Ocean or Sea:</b>	South China Sea (SCS)
-----------------------	----------------	----------------------	-----------------------

<b>Geometry</b> that best defines the feature (Yes/No) :						
Point	Line	Polygon	Multiple points	Multiple lines*	Multiple polygons*	Combination of geometries*
		Yes				

\* Geometry should be clearly distinguished when providing the coordinates below.

	Lat. (e.g. 63°32.6'N)	Long. (e.g. 046°21.3'W)
<b>Coordinates:</b>	Canyon1: 19°43.7'N	114°48.4'E
	19°47.2'N	114°47.0'E
	19°49.9'N	114°45.9'E
	19°51.9'N	114°45.0'E
	19°54.6'N	114°43.9'E
	19°55.8'N	114°43.8'E
	Canyon2: 19°45.4'N	114°50.6'E
	19°47.9'N	114°50.1'E
	19°50.2'N	114°49.0'E
	19°52.8'N	114°47.8'E
	19°55.0'N	114°47.7'E
	19°57.3'N	114°46.7'E
	Canyon3: 19°44.3'N	114°54.9'E
	19°47.4'N	114°53.5'E
	19°50.2'N	114°52.8'E
	19°52.2'N	114°52.6'E
	19°53.6'N	114°52.2'E
	19°55.2'N	114°51.2'E
	19°55.7'N	114°50.9'E
	Canyon4: 19°45.6'N	114°58.9'E
	19°47.9'N	114°57.8'E
	19°50.5'N	114°56.8'E
	19°54.6'N	114°55.8'E
	19°56.9'N	114°55.8'E
	19°58.6'N	114°55.2'E
	Canyon5: 19°46.4'N	115°01.1'E
	19°49.6'N	115°00.0'E
	19°51.9'N	114°59.4'E
	19°55.4'N	114°58.9'E
	19°57.9'N	114°58.6'E
	20°01.3'N	114°58.4'E
	Canyon6: 19°47.1'N	115°04.3'E
	19°50.5'N	115°03.0'E
	19°52.4'N	115°02.0'E
	19°53.6'N	115°01.7'E
	19°54.4'N	115°01.7'E
	19°55.7'N	115°01.3'E
	Canyon7: 19°50.5'N	115°06.7'E
	19°52.3'N	115°05.2'E
	19°55.6'N	115°03.9'E

	19°57.5'N	115°03.6'E
	20°01.3'N	115°03.6'E
	20°02.7'N	115°03.1'E
Canyon8:	19°49.3'N	115°09.5'E
	19°52.4'N	115°08.6'E
	19°56.0'N	115°07.3'E
	19°59.7'N	115°06.3'E
	20°01.9'N	115°06.0'E
	20°03.7'N	115°05.0'E
Canyon9:	19°51.3'N	115°12.1'E
	19°54.6'N	115°10.9'E
	19°58.0'N	115°10.1'E
	20°00.9'N	115°10.1'E
	20°02.4'N	115°10.2'E
Canyon10:	19°52.8'N	115°16.5'E
	19°56.6'N	115°14.7'E
	19°59.6'N	115°13.9'E
	20°01.7'N	115°13.1'E
	20°03.6'N	115°12.1'E
Canyon11:	19°56.4'N	115°19.2'E
	19°59.0'N	115°18.7'E
	20°01.5'N	115°17.0'E
	20°03.6'N	115°15.1'E
	20°04.7'N	115°14.6'E
Canyon12:	19°56.5'N	115°21.8'E
	19°59.1'N	115°21.3'E
	20°01.5'N	115°20.2'E
	20°03.4'N	115°19.1'E
	20°05.0'N	115°18.5'E
Canyon13:	19°57.9'N	115°24.8'E
	20°01.0'N	115°24.2'E
	20°04.0'N	115°23.4'E
	20°05.8'N	115°23.3'E
	20°06.6'N	115°23.1'E
Canyon14:	19°58.8'N	115°28.7'E
	20°01.0'N	115°27.9'E
	20°03.3'N	115°27.3'E
	20°05.3'N	115°26.5'E
	20°06.3'N	115°26.3'E
	20°07.4'N	115°26.3'E
Canyon15:	19°59.9'N	115°32.9'E
	20°02.2'N	115°32.7'E
	20°04.3'N	115°32.6'E
	20°05.9'N	115°33.3'E
	20°07.5'N	115°33.2'E
	20°08.3'N	115°33.5'E
	20°09.2'N	115°33.6'E
Canyon16:	20°02.4'N	115°40.1'E
	20°04.7'N	115°39.4'E
	20°06.5'N	115°39.1'E
	20°07.9'N	115°38.6'E
	20°08.4'N	115°38.6'E

<b>Feature Description:</b>	Maximum Depth:	1714m	Steepness :	
	Minimum Depth :	296m	Shape :	
	Total Relief :	1418m	Dimension/Size :	126.8km ×36.4km

<b>Associated Features:</b>	Shenhu Canyons lie on the Northern SCS Slope, consisting of 16 canyons. The 16 canyons descend from east to west. The largest canyon is 38.3km long and 7.5km wide, with relief 245m.	
<b>Chart/Map References:</b>	Shown Named on Map/Chart:	Atlas of Geology and Geophysics of the South China Sea (1 : 2 000 000) ,published in 2015
	Shown Unnamed on Map/Chart:	GEBCO 5.06
	Within Area of Map/Chart:	
<b>Reason for Choice of Name</b> (if a person, state how associated with the feature to be named):	Shenhu Canyons are adjacent to the Shenhu Shoal. Shenhu is used to name the canyons. Shenhu Shoal was named in 1983 by China Geographical Names Committee. In May 2017, production test of natural gas hydrate was successfully implemented in Shenhu Canyons by China Geological Survey.	
<b>Discovery Facts:</b>	Discovery Date:	2000
	Discoverer (Individual, Ship):	R/V Haiyang No.4
<b>Supporting Survey Data, including Track Controls:</b>	Date of Survey:	2000-2001
	Survey Ship:	R/V Haiyang No.4
	Sounding Equipment:	Multi-beam sounding system (Seabeam2112)
	Type of Navigation:	DGPS
	Estimated Horizontal Accuracy, in nautical miles (M):	<=0.08 nm
	Survey Track Spacing:	2.5nm
	Supporting material can be submitted as Annex in analog or digital form.	
<b>Proposer(s):</b>	Name(s):	Zhu Benduo, Liu Liqiang
	Date:	Jun. 10, 2018
	E-mail:	Zhubenduo@163.com
	Organization and Address:	Guangzhou Marine Geological Survey, China Geological Survey. No.188 Guanghai Rd., Huangpu District, Guangzhou, China.
	Concurrer (name, e-mail, organization and address):	
<b>Remarks:</b>	The proposal has been reviewed and approved by Sub-Committee on Undersea Feature Names of China Committee on Geographical Names (CCUFN) No.1 Fuxingmenwai Ave. Beijing 100860 heyunxu@sina.com	

**NOTE:** This form should be forwarded, when completed:

- a) **If the undersea feature is located inside the external limit of the territorial sea:**  
- to your "National Authority for Approval of Undersea Feature Names" (see Publication B-6) or, if this does not exist or is not known, either to the IHO or to the IOC (see addresses below);

- b) **If at least 50 % of the undersea feature is located outside the external limits of the territorial sea:**  
- to the IHO or to the IOC, at the following addresses :

International Hydrographic Organization (IHO) 4b, Quai Antoine 1er B.P. 445 MC 98011 MONACO CEDEX <u>Principality of MONACO</u> Fax: +377 93 10 81 40 E-mail: <a href="mailto:info@iho.int">info@iho.int</a> Web: <a href="http://www.iho.int">www.iho.int</a>	Intergovernmental Oceanographic Commission (IOC) UNESCO Place de Fontenoy 75700 PARIS France Fax: +33 1 45 68 58 12 E-mail: <a href="mailto:info@unesco.org">info@unesco.org</a> Web: <a href="http://ioc-unesco.org/">http://ioc-unesco.org/</a>
---	--

Attachment

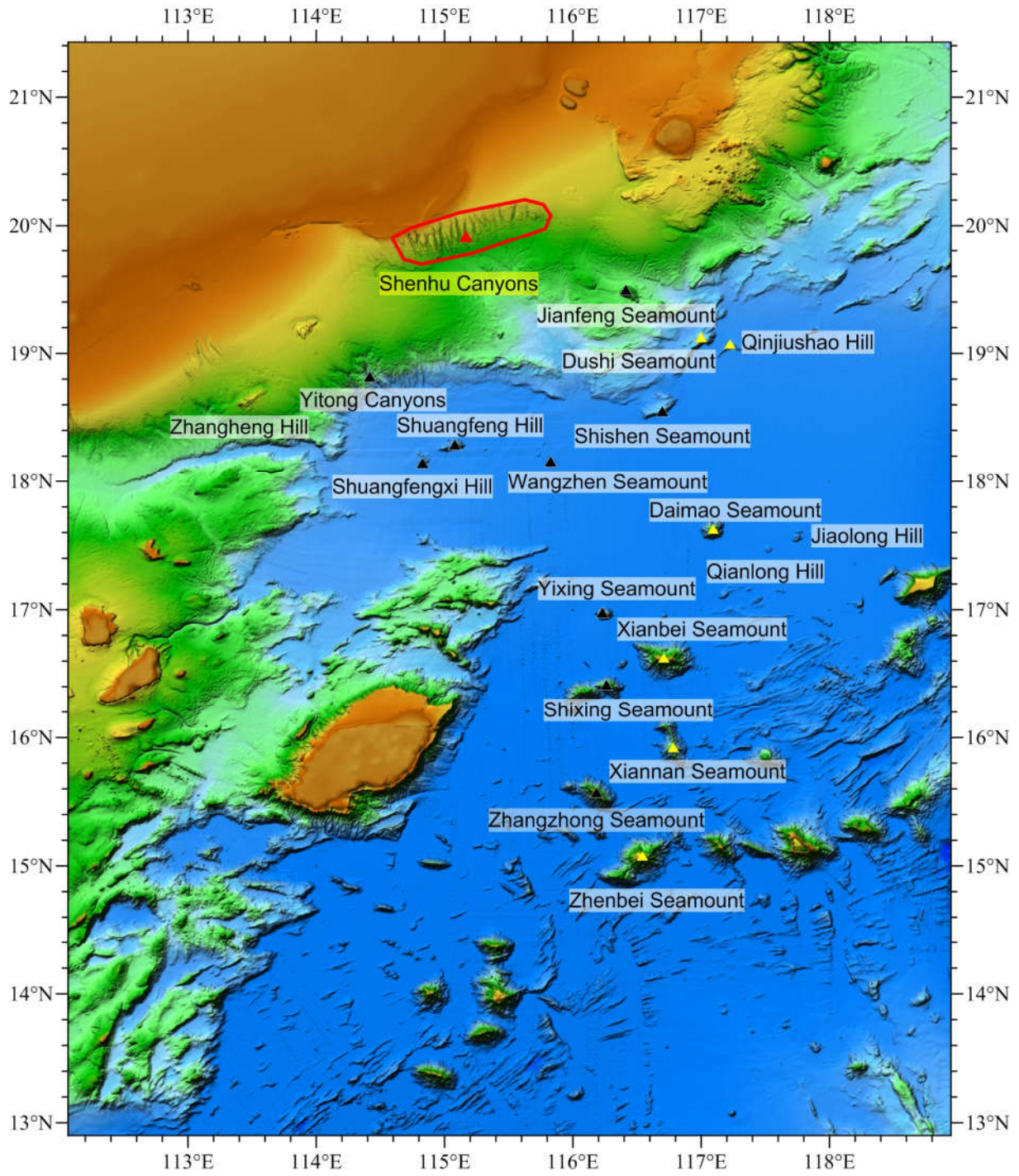


Fig.1 Index map showing the location of Shenhu Canyons

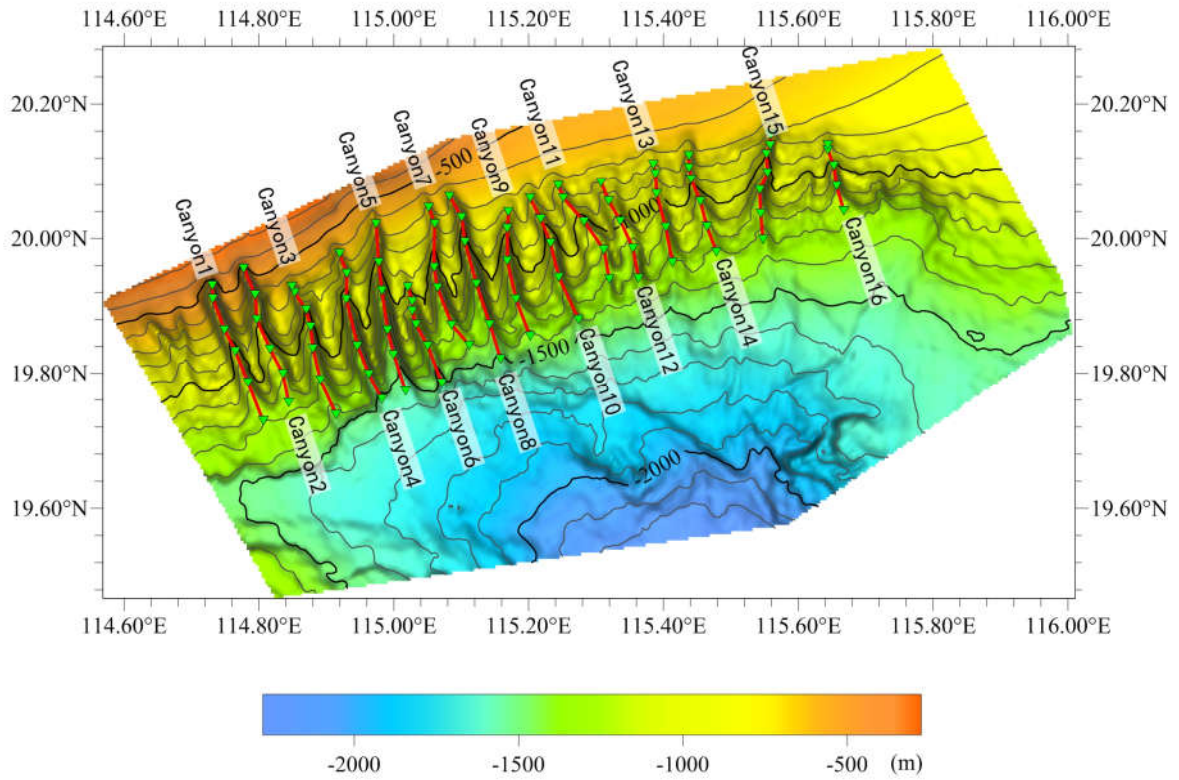


Fig.2 Bathymetric map of Shenhu Canyons (Contours are in 100m)

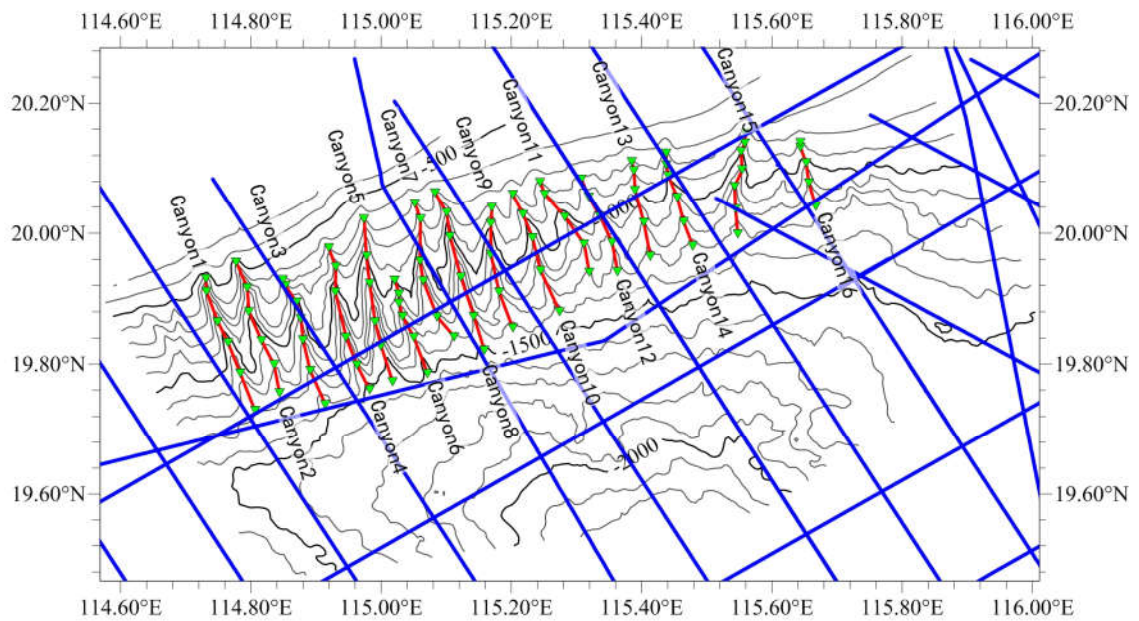


Fig.3 Bathymetric map of Shenhu Canyons overlain with track lines (Contours are in 100m, blue lines for the track lines)

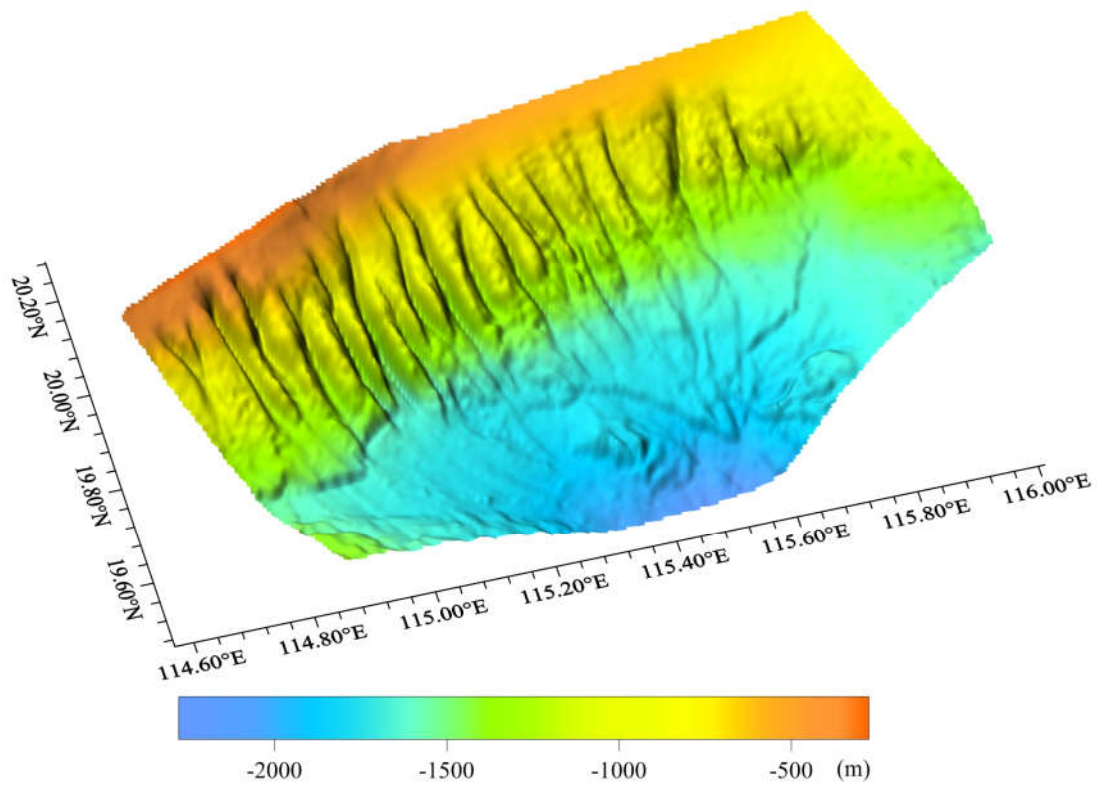


Fig.4 3-D bathymetric map of Shenhu Canyons

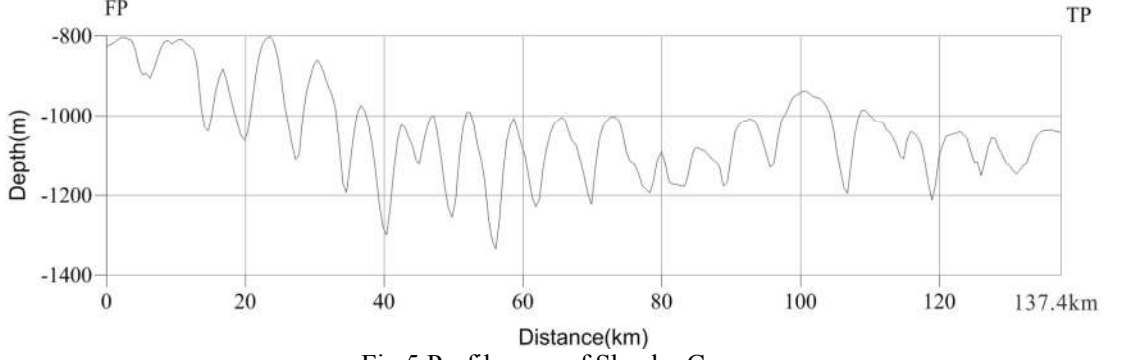
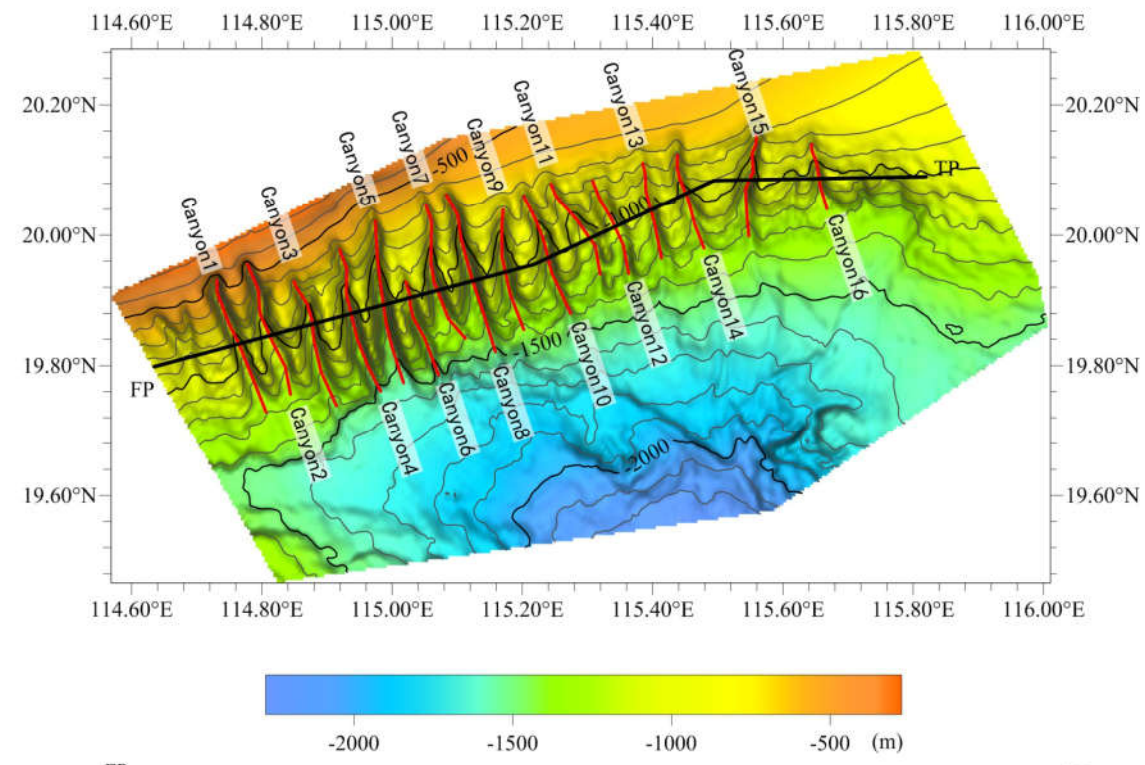


Fig.5 Profile map of Shenhu Canyons