



CHART 12221_1

CHESAPEAKE BAY ENTRANCE

SCALE: 80000

EDITION NUMBER: 70

EDITION DATE: 09/12/1998

AGENCY: USA-NOAA/NOS

DATUM: North American 1983 (CONUS)

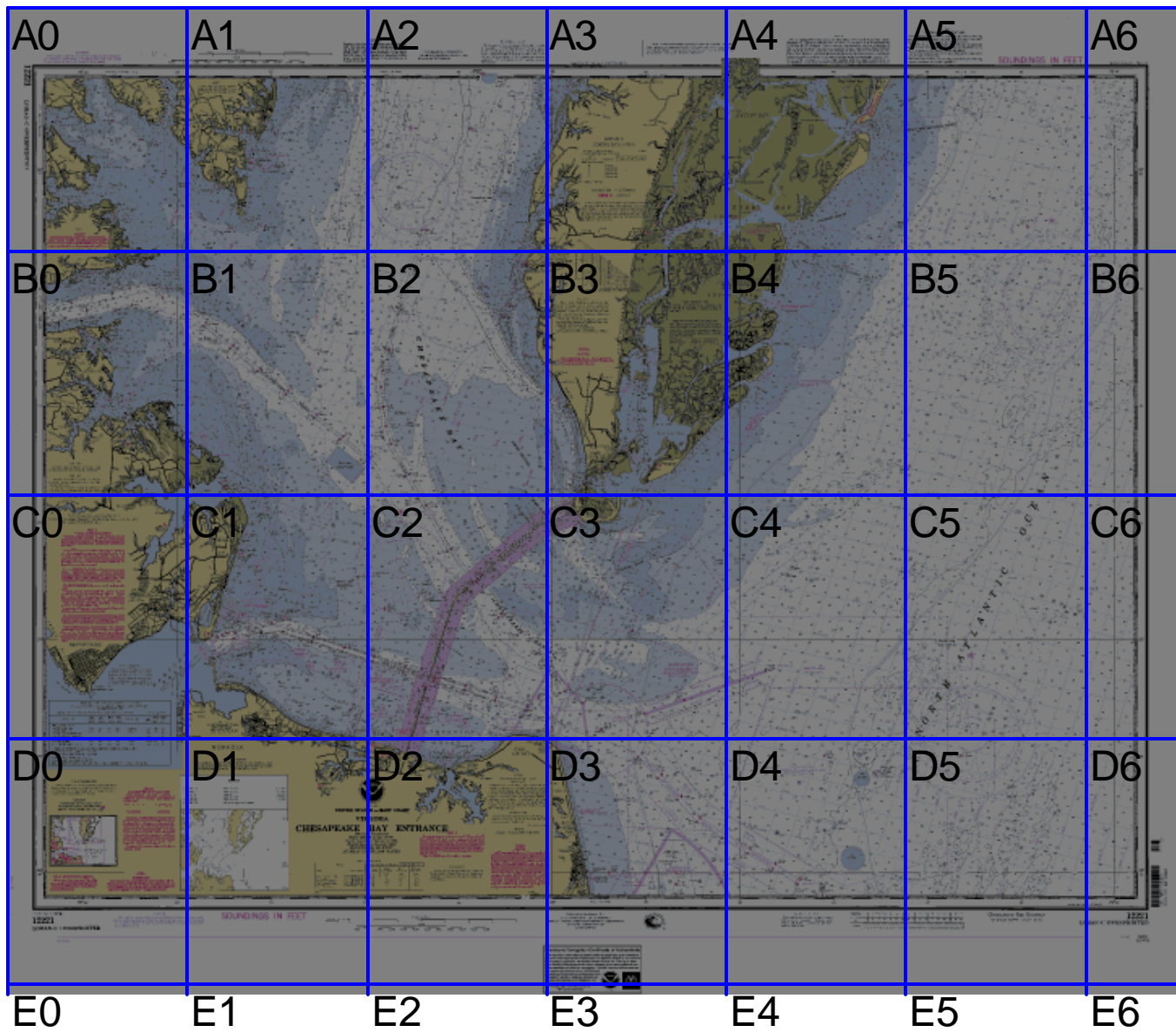
PROJECTION: MERCATOR

DEPTH UNITS: FEET

NOT FOR NAVIGATION

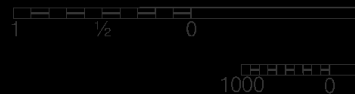
**WARNING: THIS PRINTOUT IS SOLELY FOR YOUR PERSONAL USE AND MAY NOT BE
SOLD OR DISTRIBUTED IN ANY MANNER. PLEASE REFER TO THE TERMS OF YOUR
MAPTECH LICENSE AGREEMENT.**

COPYRIGHT 2000 MAPTECH, INC.



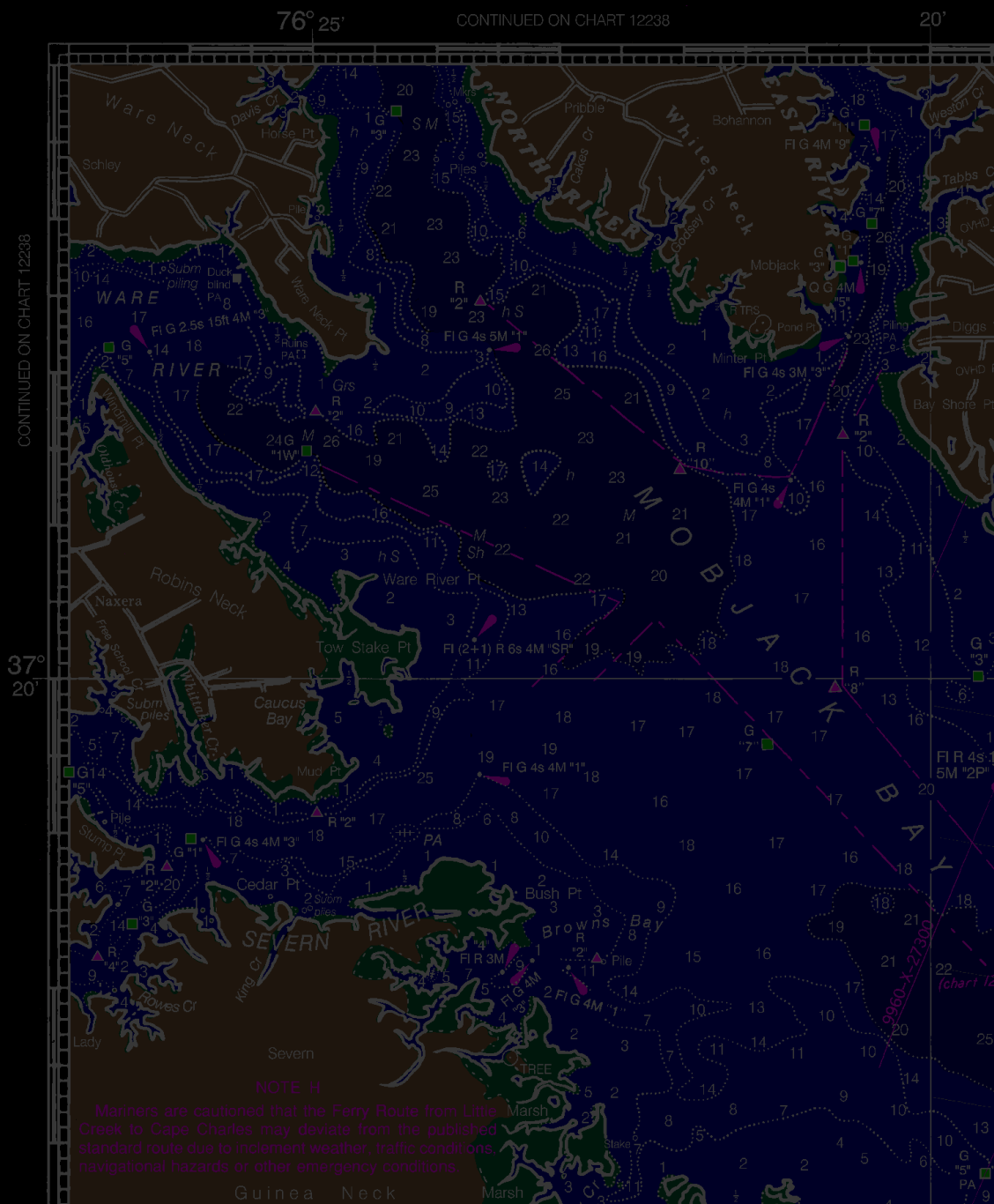
WARNING

The prudent mariner will not rely solely on any single aid to navigation, particularly on floating aids. See U.S. Coast Guard Light List and U.S. Coast Pilot for details.



12221

LORAN-C OVERPRINTED



NOTE H

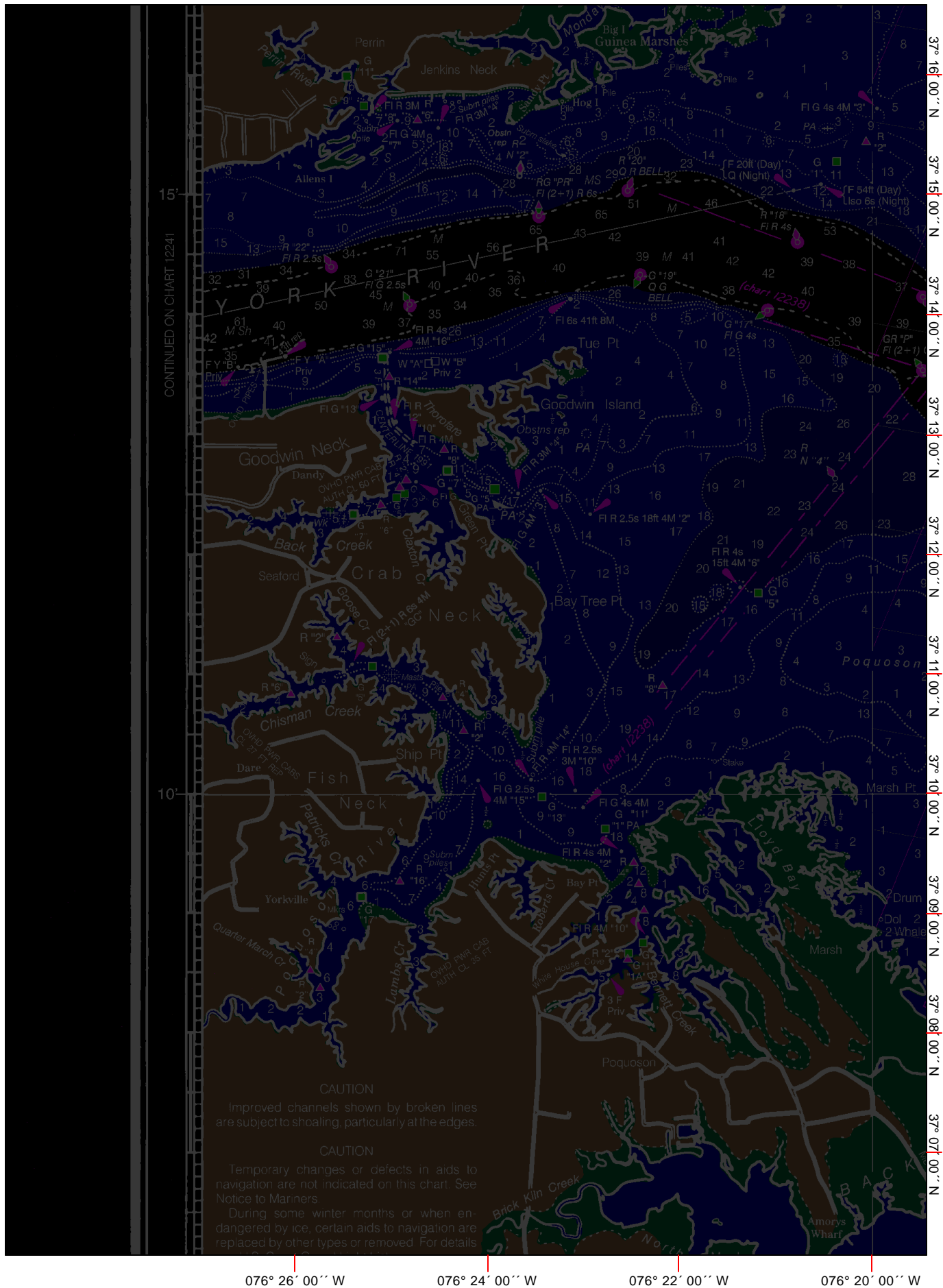
Mariners are cautioned that the Ferry Route from Little Creek to Cape Charles may deviate from the published standard route due to inclement weather, traffic conditions, navigational hazards or other emergency conditions.

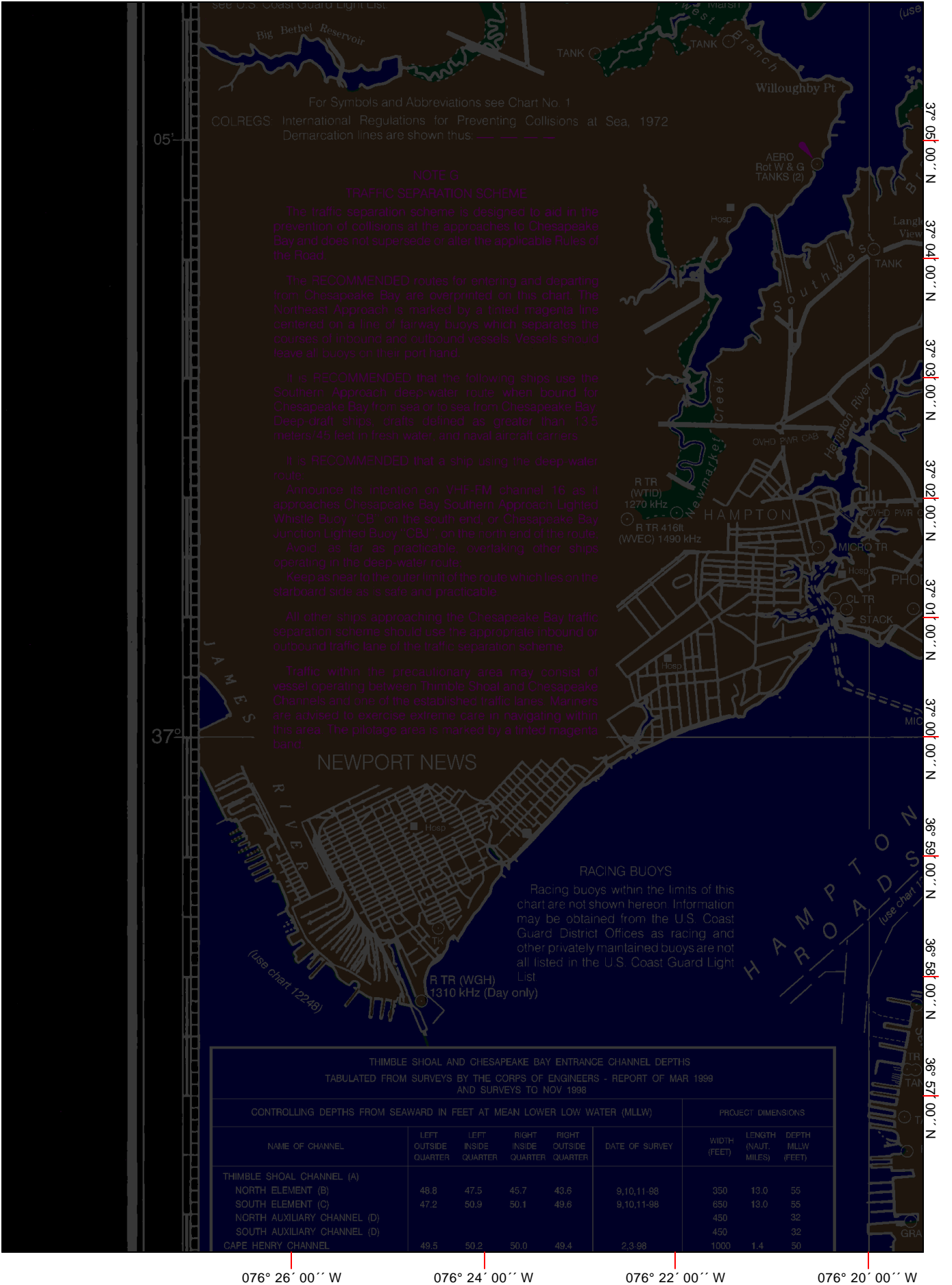
076° 26' 00" W

076° 24' 00" W

076° 22' 00" W

076° 20' 00" W




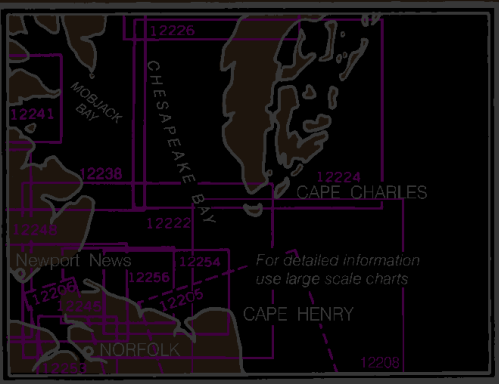




YORK SPIT CHANNEL	44.9	49.6	49.9	46.8	4,5-98	1000(E)	18.4	50
YORK RIVER ENTRANCE CHANNEL	35.1	37.5	45.3	36.1	6-94	750	13.8	39

A. CHANNEL IS RESTRICTED TO EXCLUDE VESSELS AND TOWS DRAWING LESS THAN 25 FEET.
 B. PORTION OF PROJECT MAINTAINED TO 45 FEET.
 C. PORTION OF PROJECT MAINTAINED TO 50 FEET.
 D. PROJECT MAINTENANCE DISCONTINUED.
 E. CHANNEL WIDTH MAINTAINED TO 800 FEET.
 NOTE - CONSULT THE CORPS OF ENGINEERS FOR CHANGES SUBSEQUENT TO THE ABOVE INFORMATION.

POLLUTION REPORTS
 Report all spills of oil and hazardous substances to the National Response Center via 1-800-424-8802 (toll free), or to the nearest U.S. Coast Guard facility if telephone communication is impossible (33 CFR 153).

CAUTION
 Mariners are warned to stay clear of the protective riprap surrounding navigational light structures shown thus: 



CAUTION
SUBMARINE PIPELINES AND CABLES
 Charted submarine pipelines and submarine cables and submarine pipeline and cable areas are shown as:


 Pipeline Area Cable Area

Additional uncharted submarine pipelines and submarine cables may exist within the area of this chart. Not all submarine pipelines and submarine cables are required to be buried, and those that were originally buried may have become exposed. Mariners should use extreme caution when operating vessels in depths of water comparable to their draft in areas where pipelines and cables may exist, and when anchoring, dragging, or trawling.
 Covered wells may be marked by lighted or unlighted buoys.

LOCAL MAGNETIC DISTURBANCE
 Differences of as much as 6° from the normal variation have been observed 3 to 17 nautical miles offshore from Cape Henry to Currituck Beach Light.

NOTE D
DANGER AREA
 Area is open to unrestricted surface navigation but all vessels are cautioned neither to anchor, dredge, trawl, lay cables, bottom, nor conduct any other similar type of operation because of residual danger from mines on the bottom.

70th Ed., Sept. 12/98 ■
12221
LORAN-C OVERPRINTED

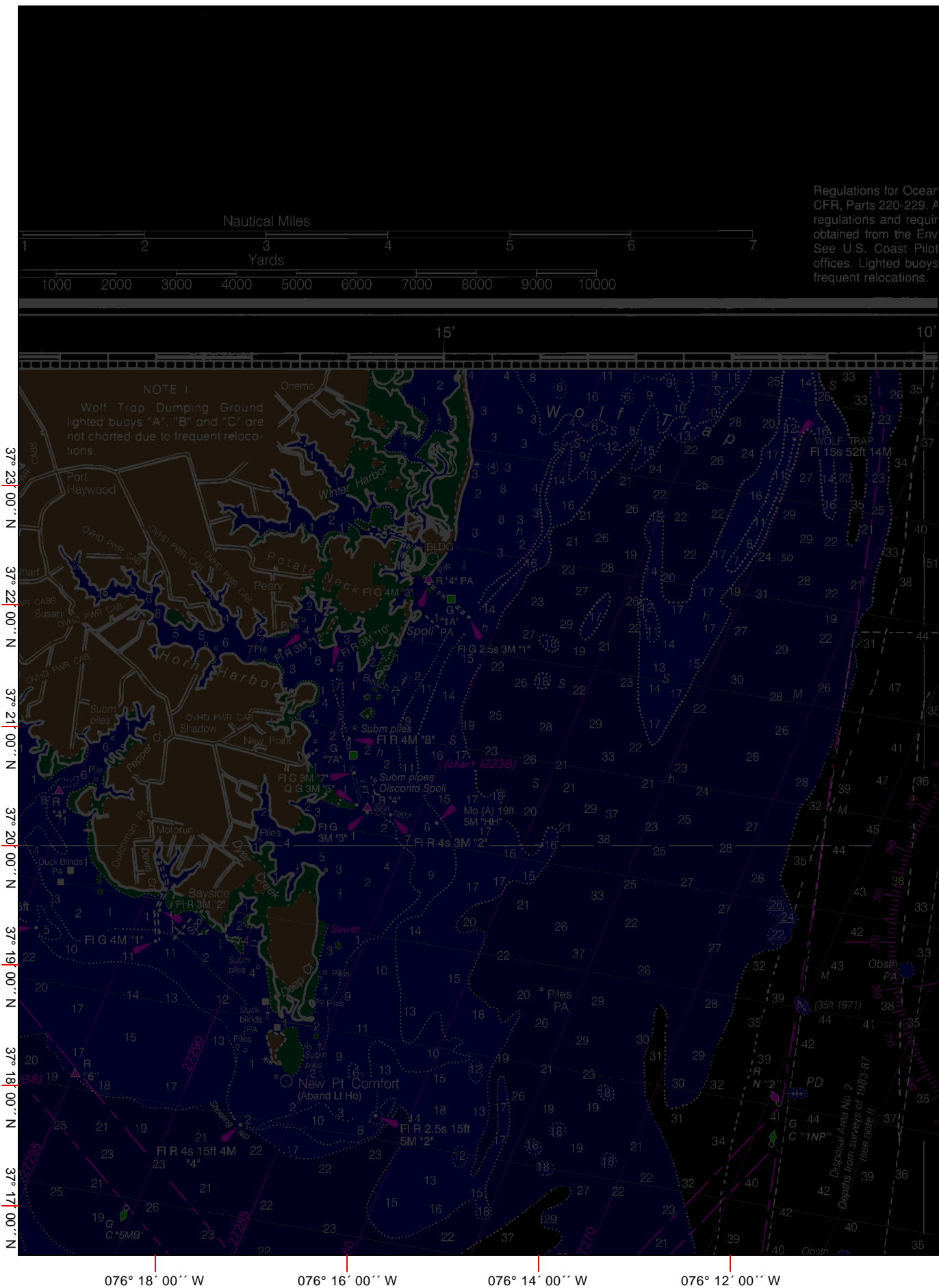
CAUTION
 This chart has been corrected from the Notice to Mariners published by the National Imagery and Mapping Agency and the Local Notice issued periodically by each U.S. Coast Guard district to the date lower left hand corner.

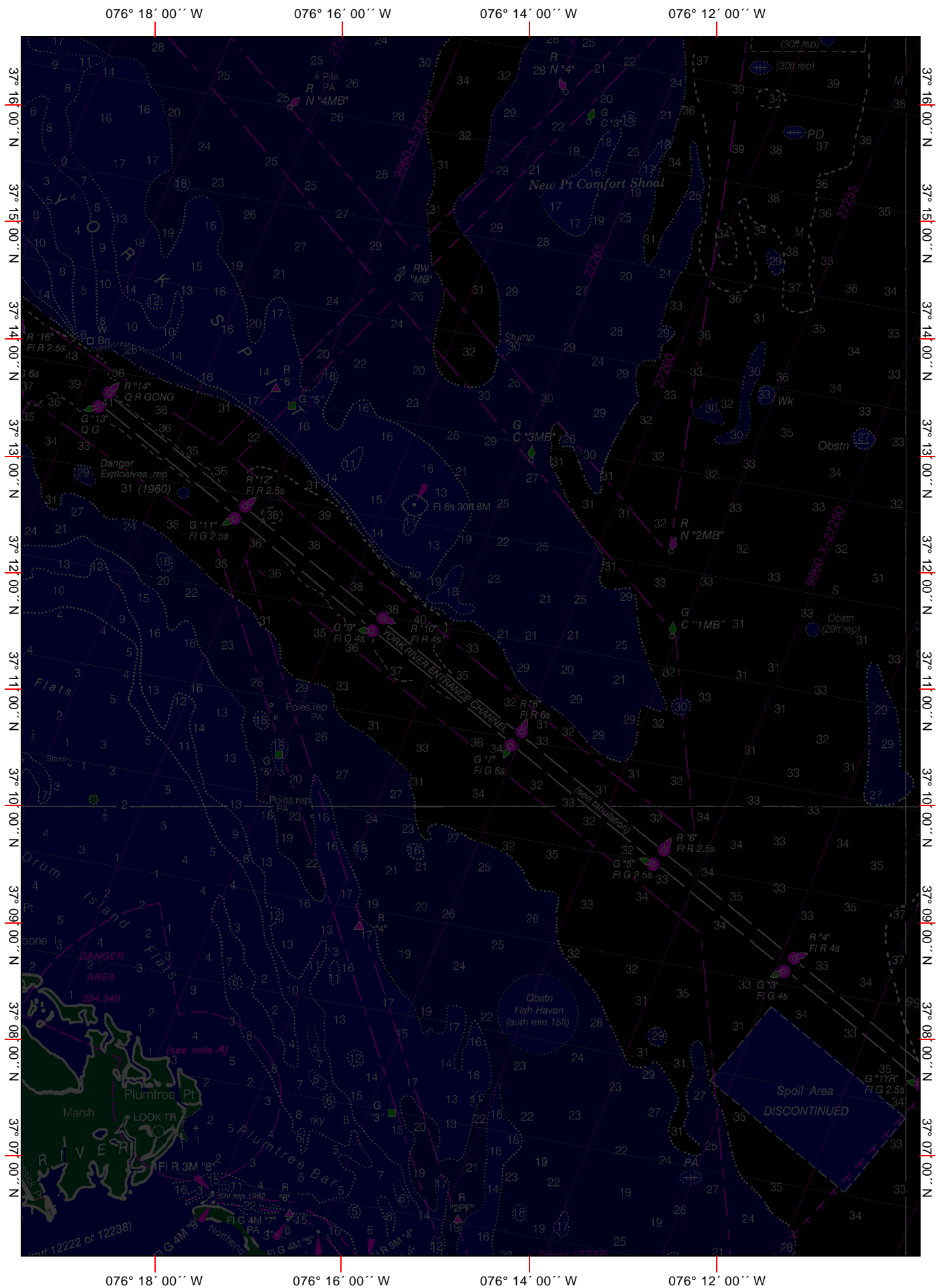
30 inches

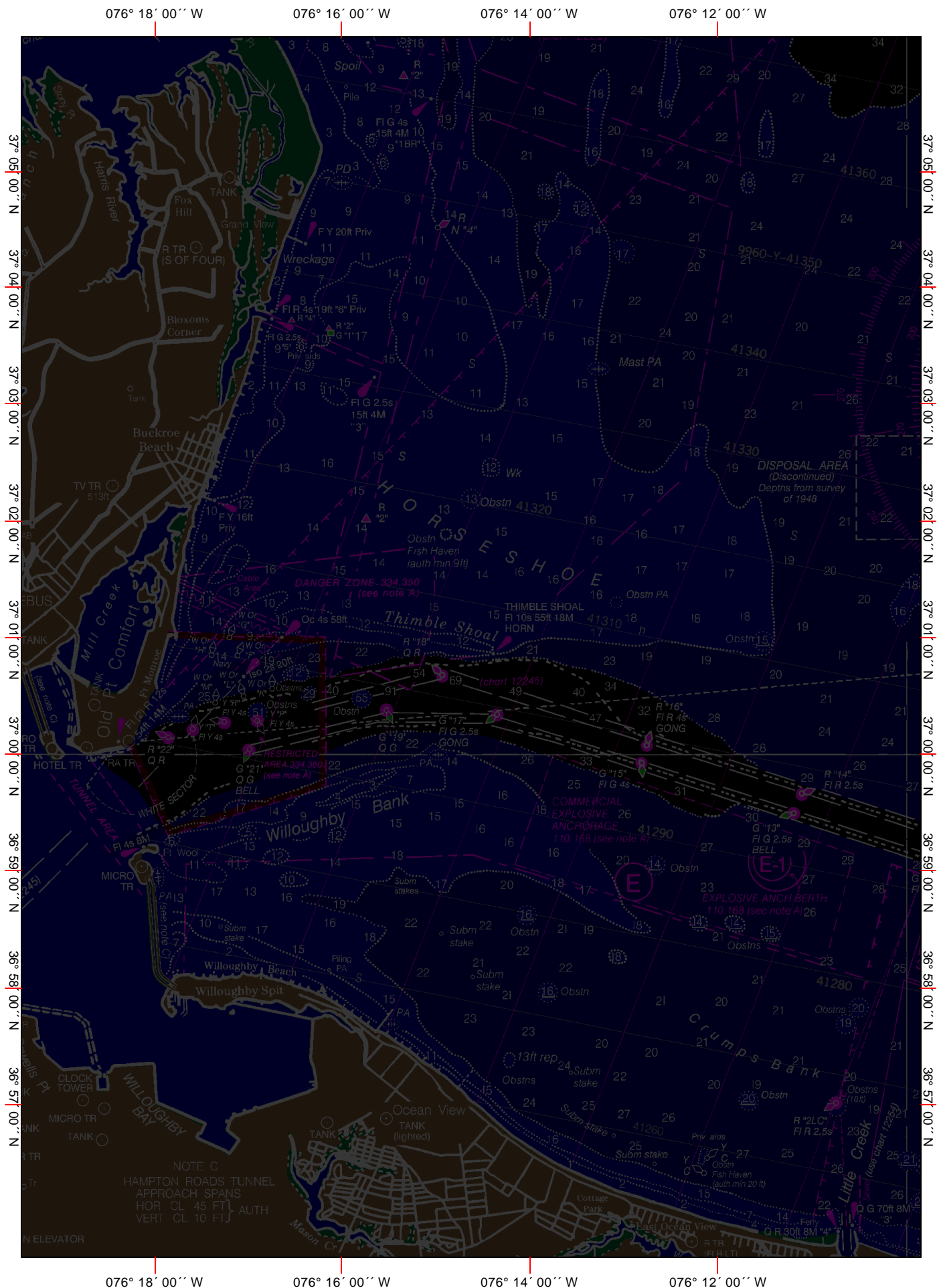
40 inches



Regulations for Ocean CFR, Parts 220-229. A regulations and require obtained from the Env See U.S. Coast Pilot offices. Lighted buoys frequent relocations.







076° 12' 00'' W

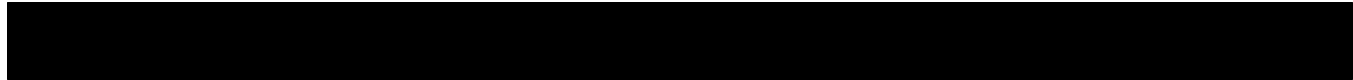


Chart Number: 12221_1

Revision Number: 0

Cleared Date:

Date Printed: 08/06/2001 NOT FOR NAVIGATION

Page: E1

NOTE S

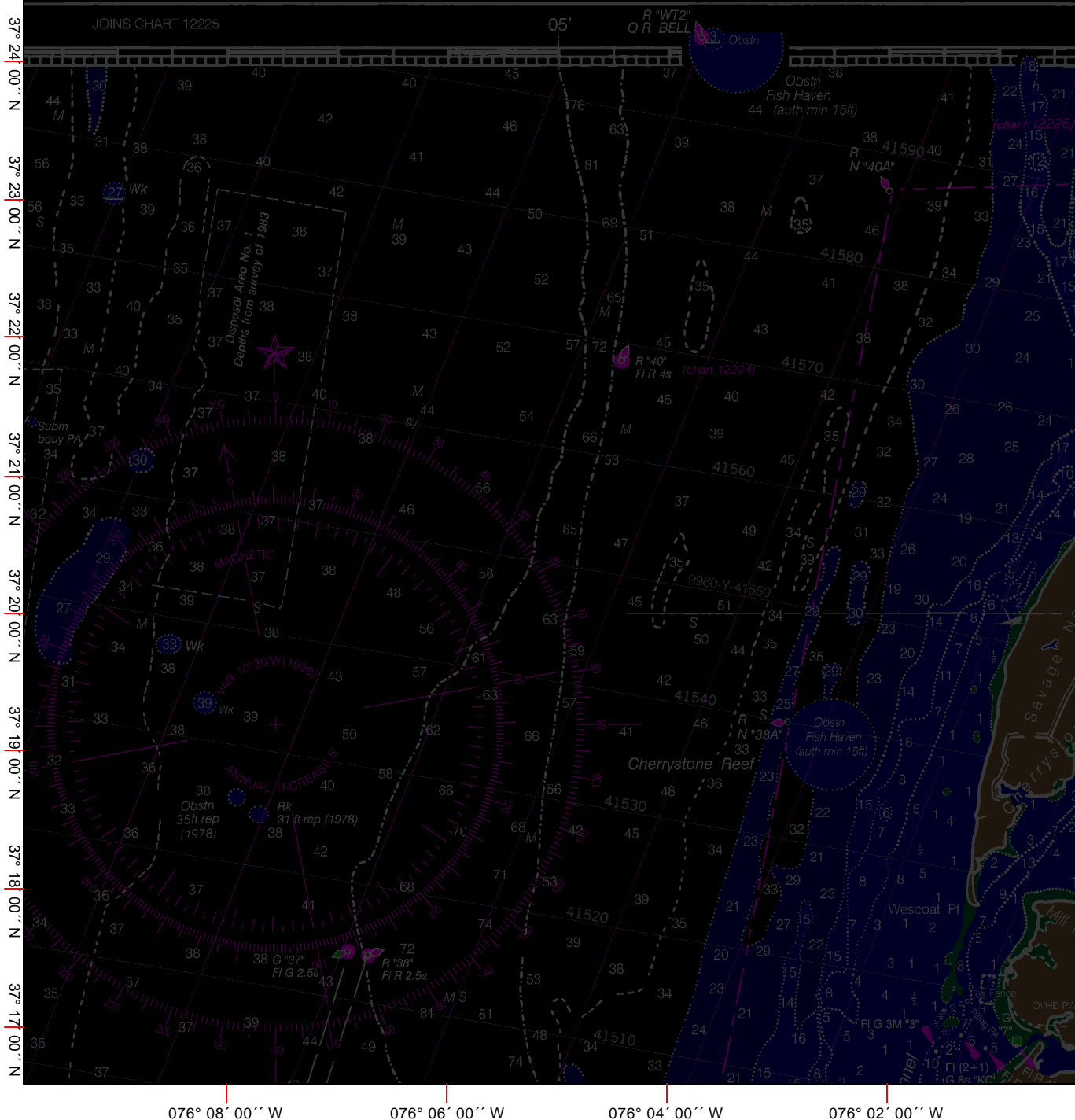
Dumping Sites are contained in 40
Additional information concerning the
elements for use of the sites may be
Environmental Protection Agency (EPA).
s appendix for addresses of EPA
A through F are uncharted due to

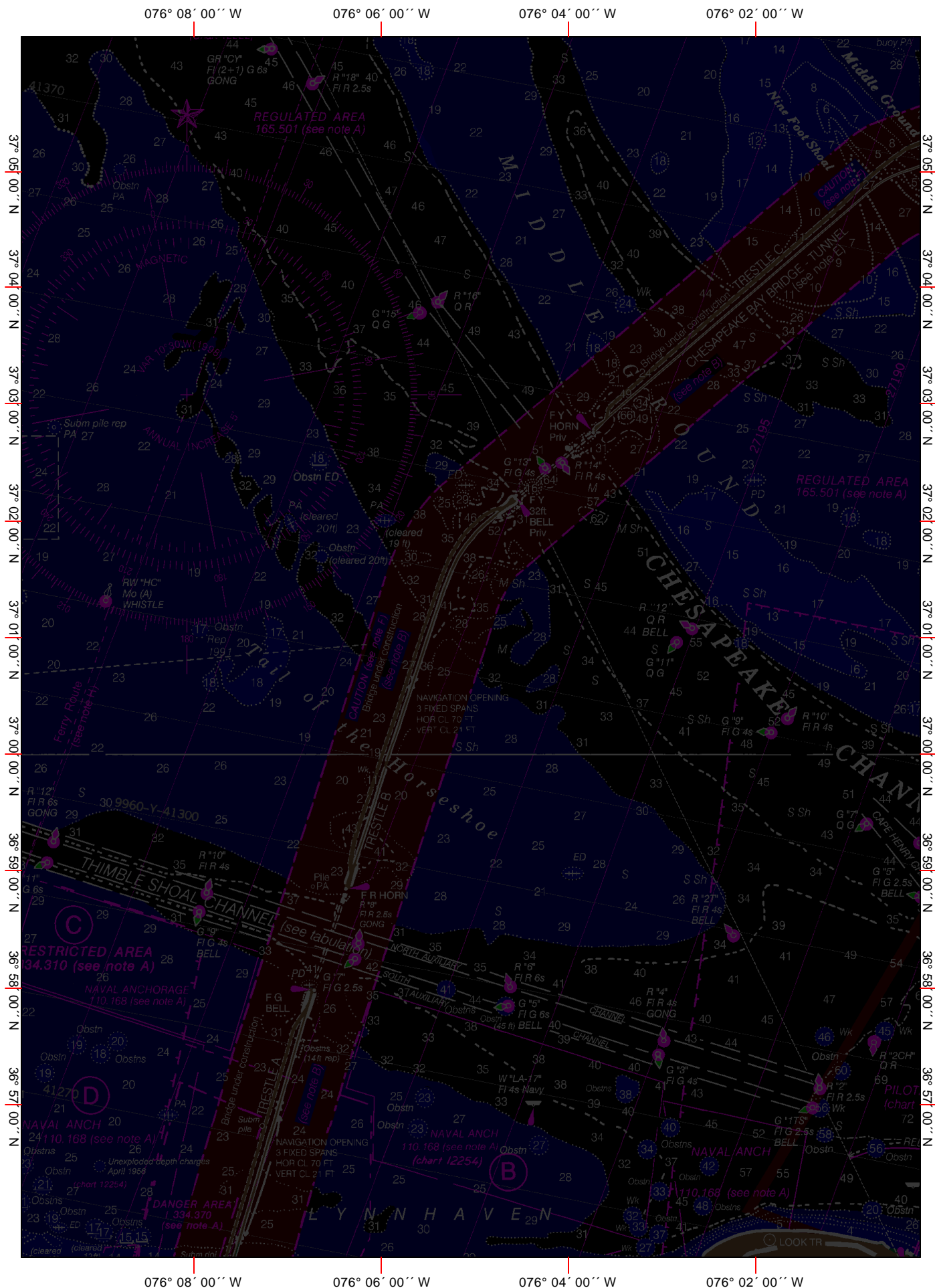
SUPPLEMENTAL INFORMATION

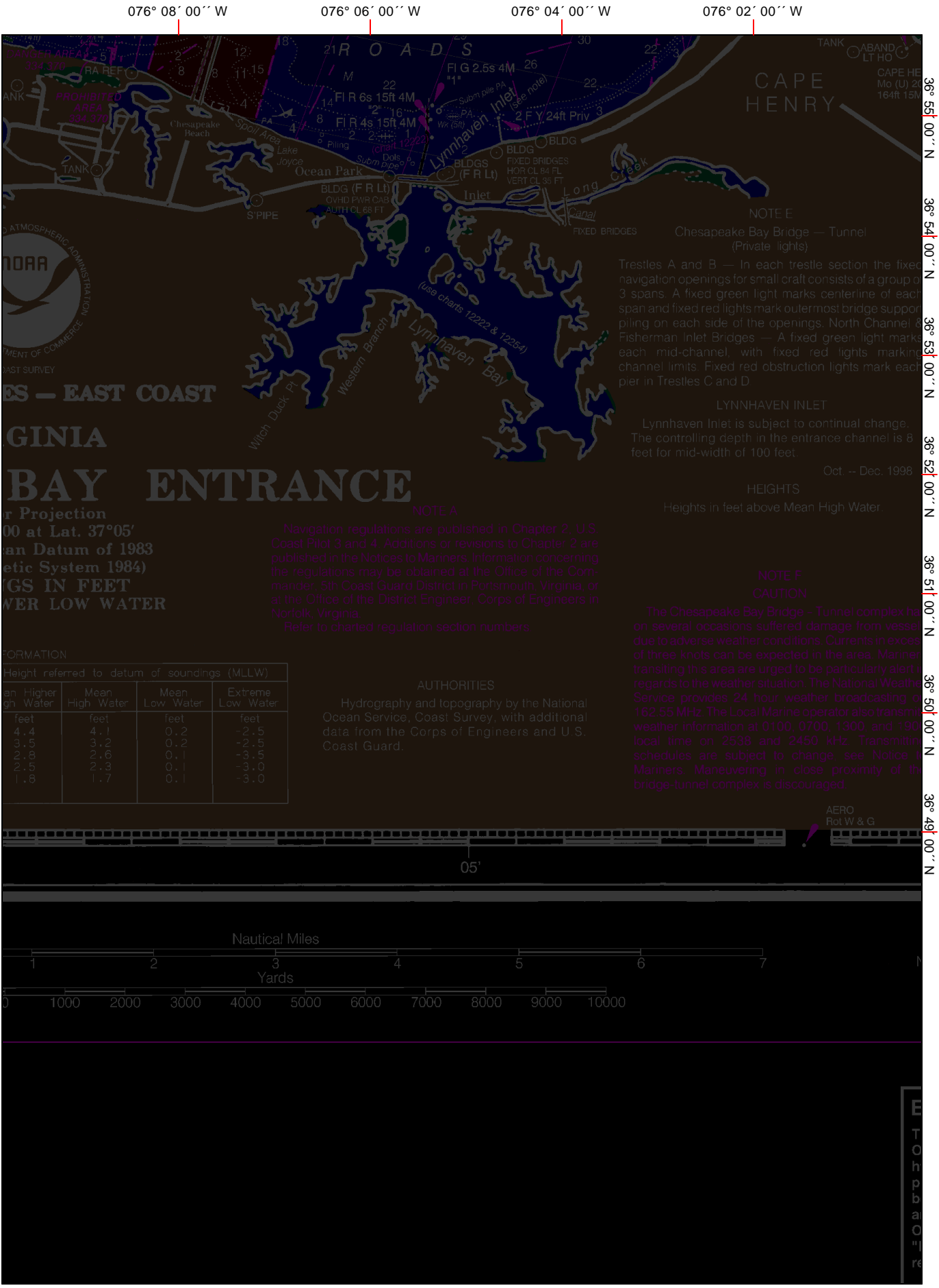
Consult U.S. Coast Pilots 3 and 4 for import-
ant supplemental information.

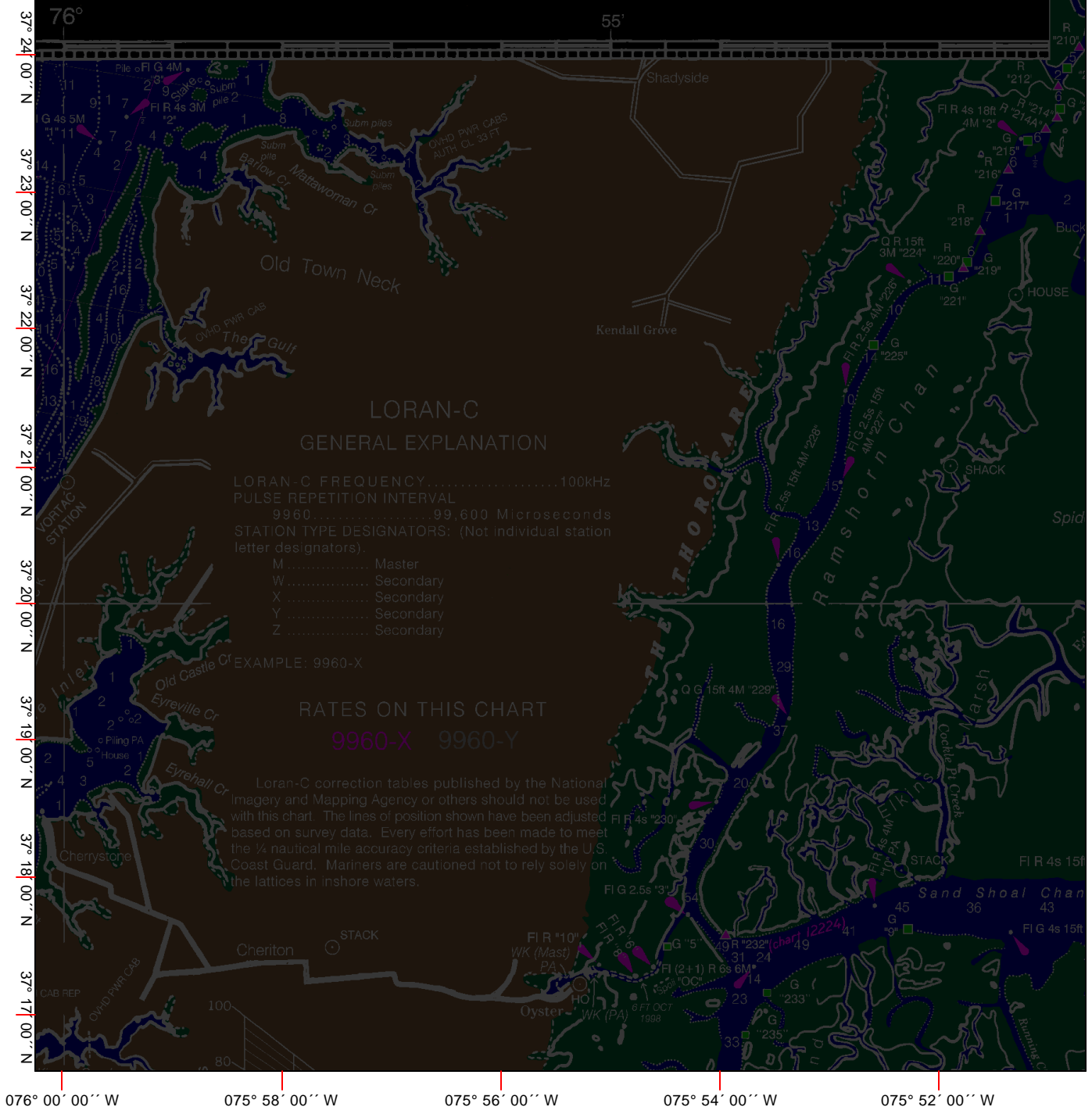
HORIZONTAL DATUM

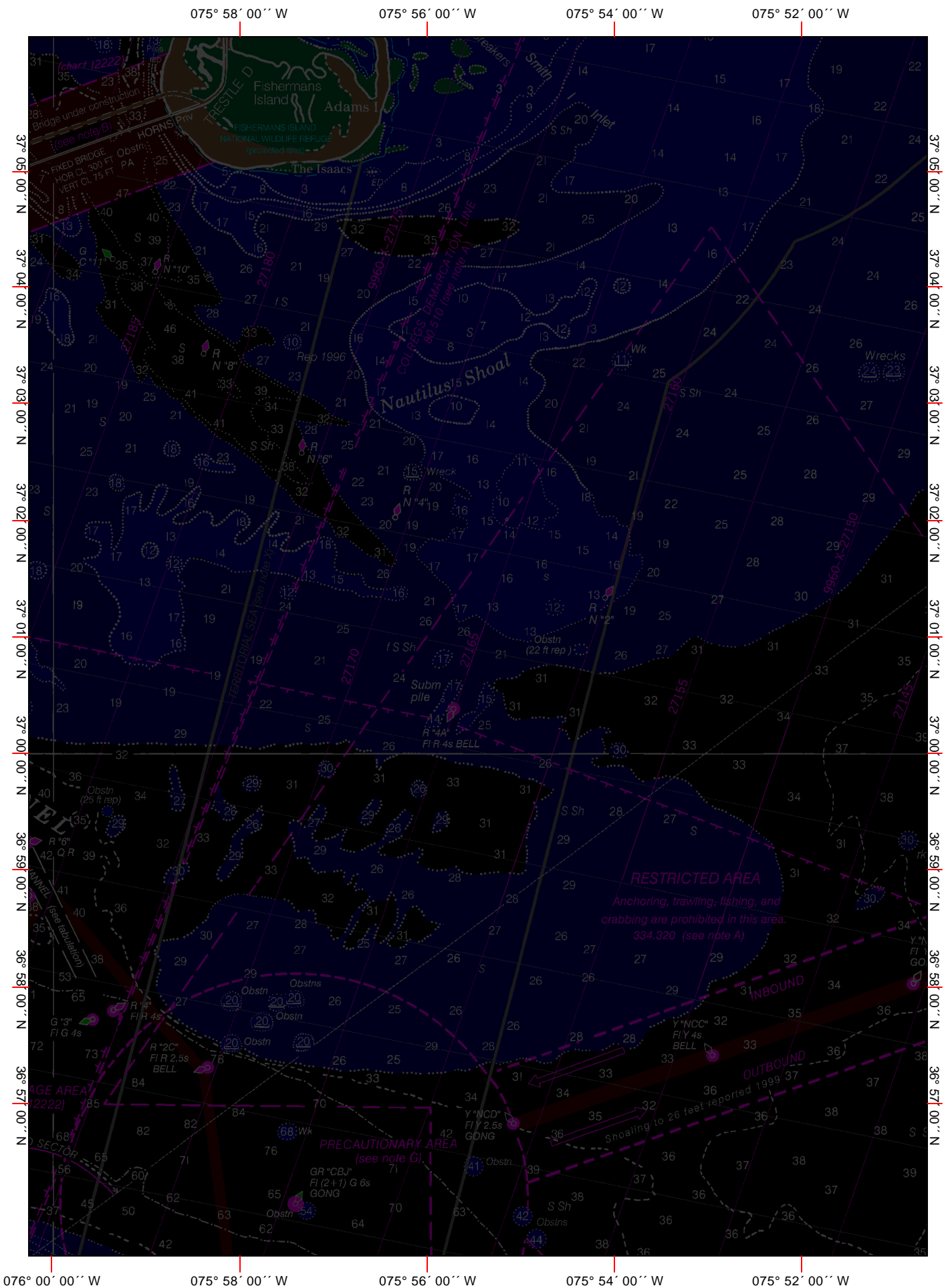
The horizontal reference datum of this chart is North
American Datum of 1983 (NAD 83), which for charting pur-
poses is considered equivalent to the World Geodetic
System 1984 (WGS 84). Geographic positions referred to
the North American Datum of 1927 must be corrected an
average of 0.524" northward and 1.216" eastward to agree
with this chart.









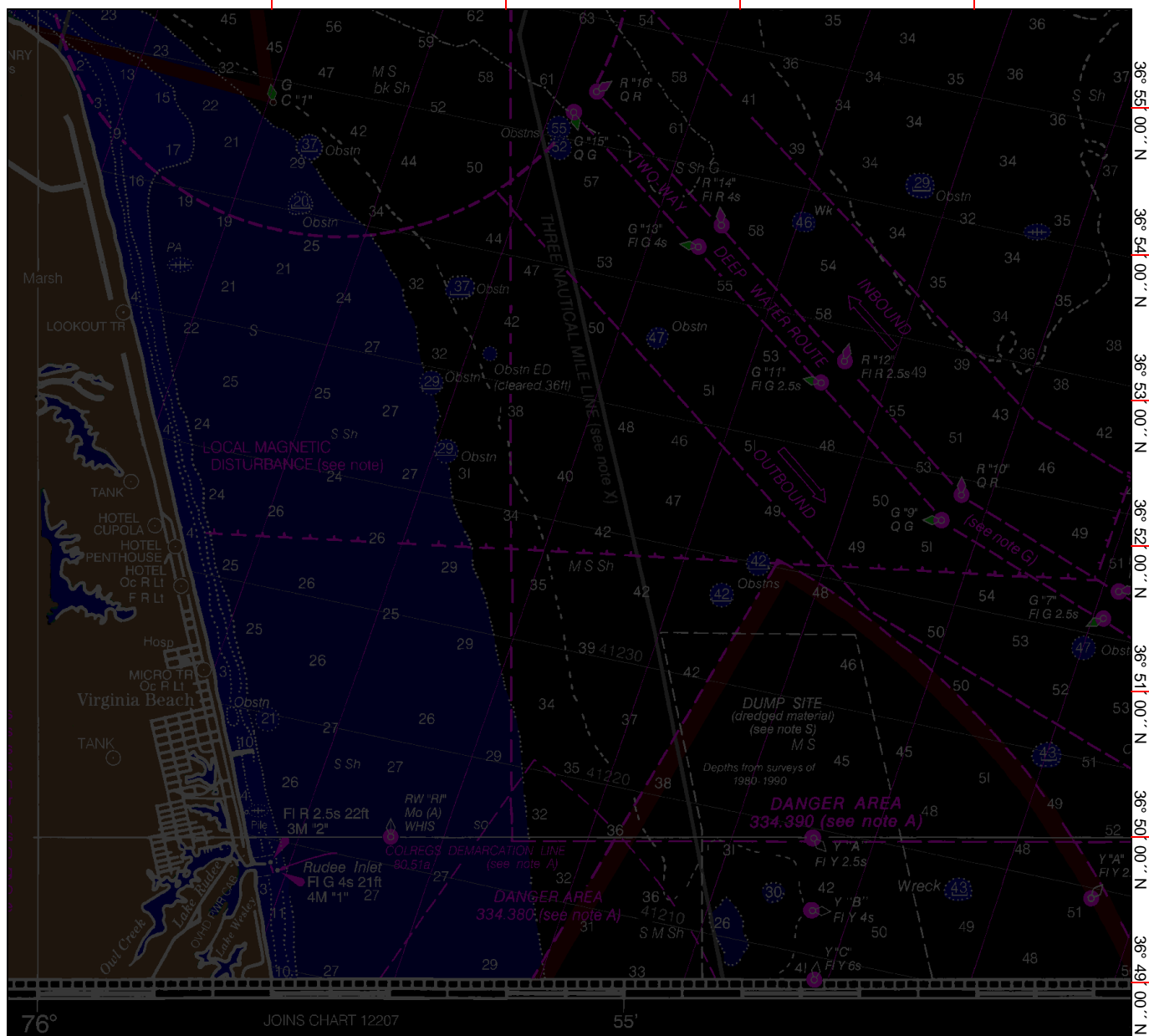


075° 58' 00" W

075° 56' 00" W

075° 54' 00" W

075° 52' 00" W



Published at Washington, D.C.
 U.S. DEPARTMENT OF COMMERCE
 NATIONAL OCEANIC AND ATMOSPHERIC ADMINISTRATION
 NATIONAL OCEAN SERVICE
 COAST SURVEY

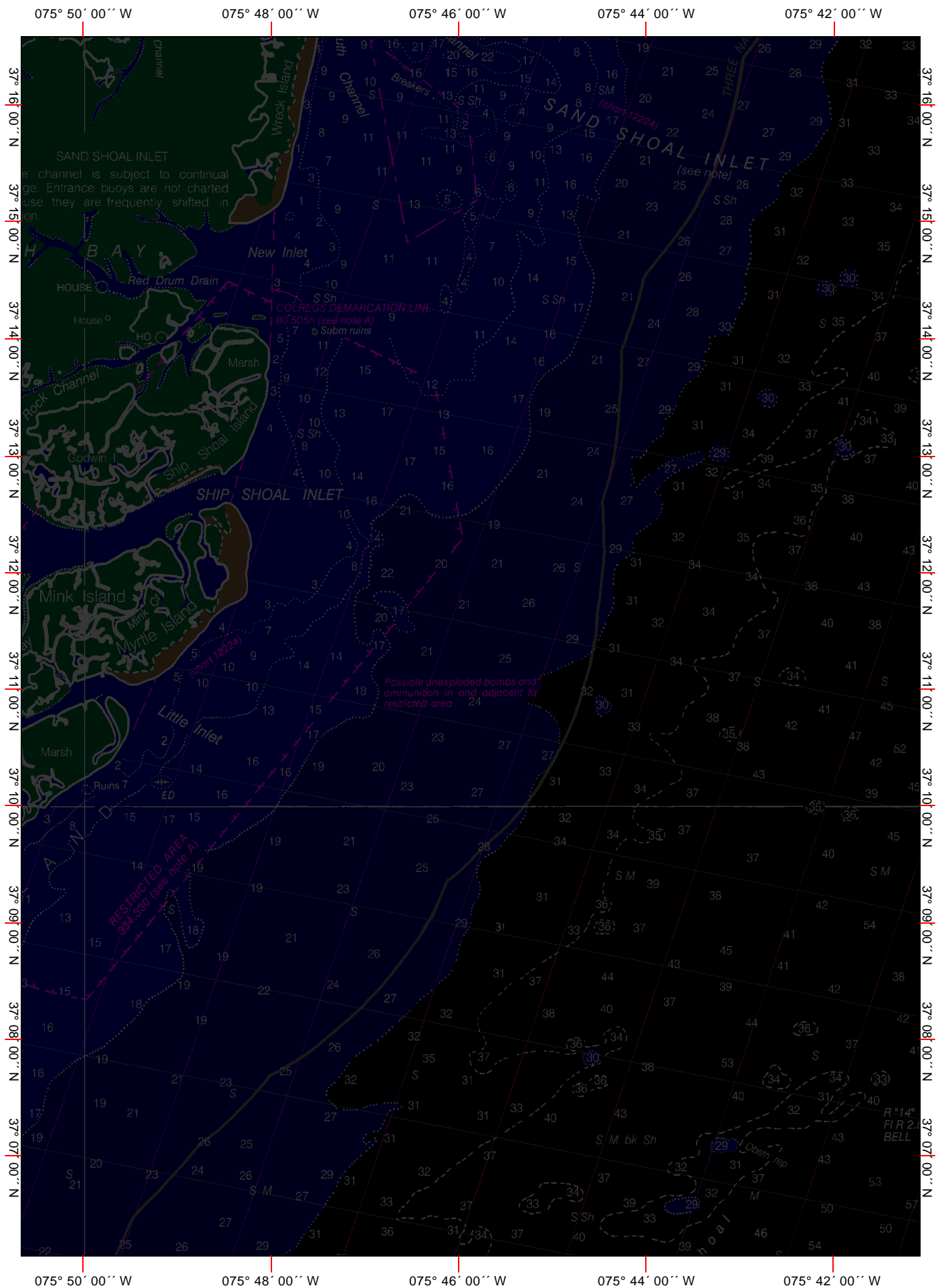


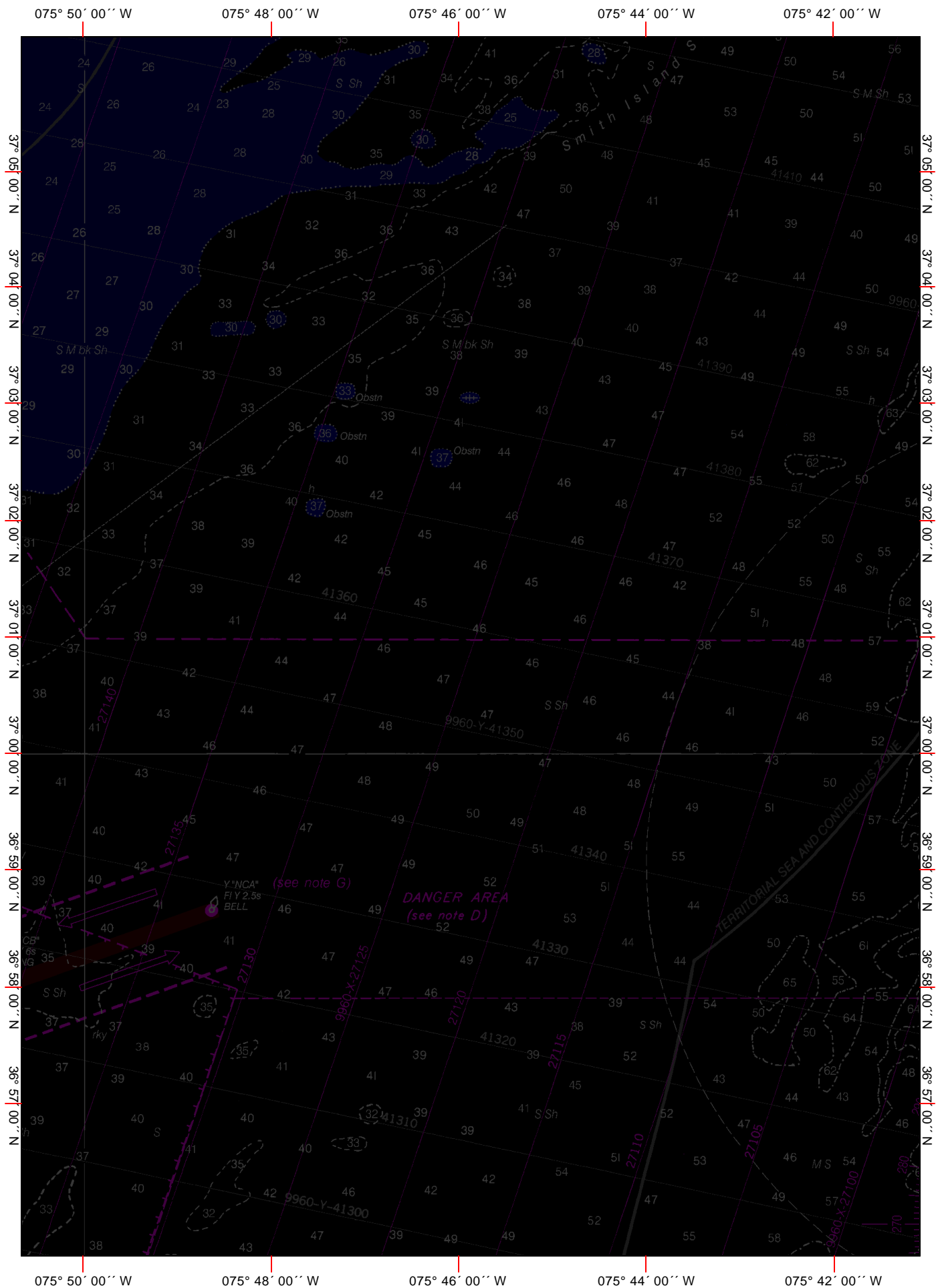
Electronic Navigation Certificate of Authenticity

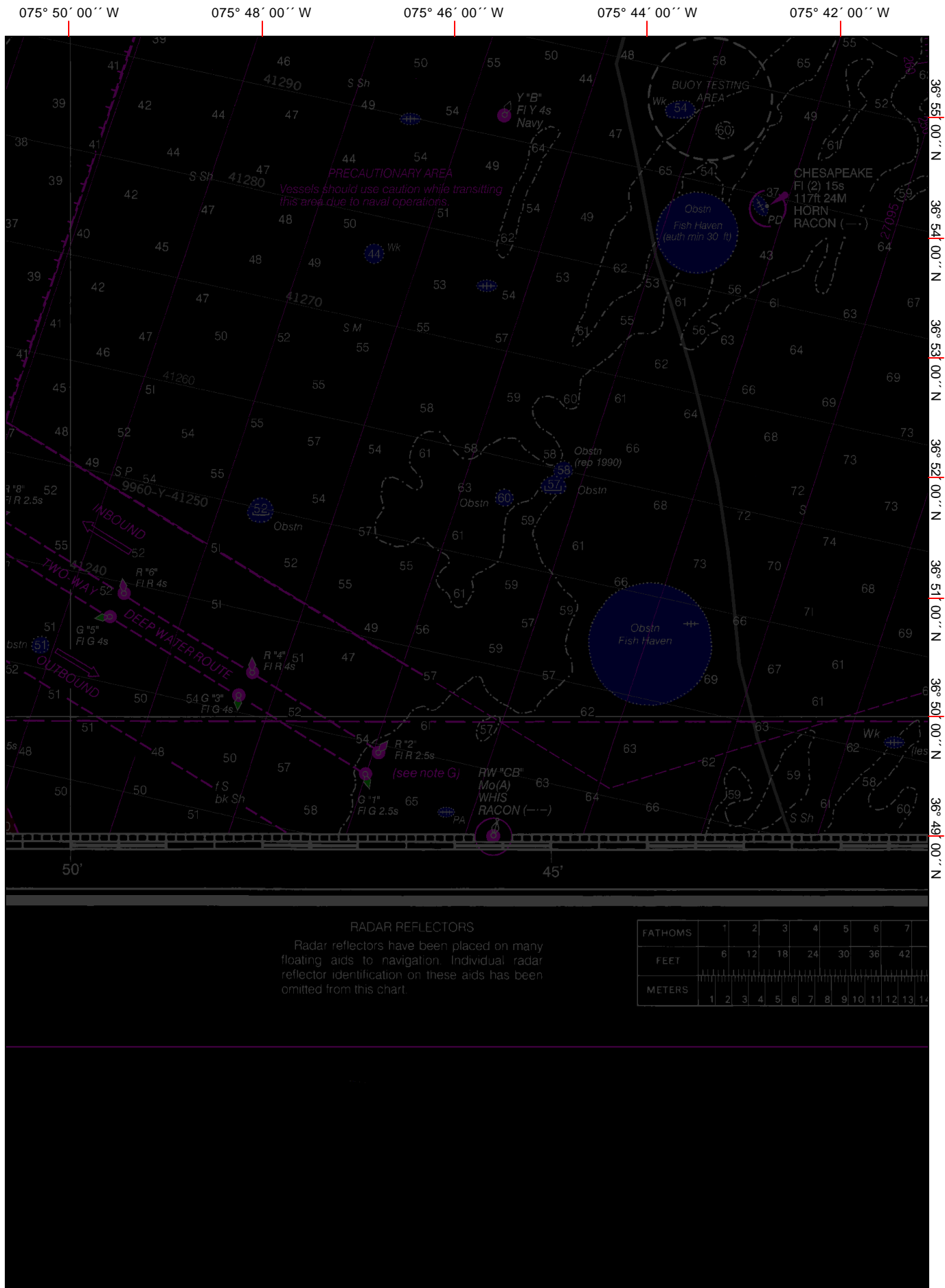
This electronic chart was produced under the authority of the National Oceanic and Atmospheric Administration (NOAA). NOAA is the national hydrographic office for the United States of America. The digital data provided by NOAA from which this electronic chart was produced has been certified by NOAA for navigation. "NOAA" and the NOAA emblem are registered trademarks of the National Oceanic and Atmospheric Administration. "Maptech" and the Maptech emblem are registered trademarks of Maptech, Inc.













CAUTION
FISH TRAP AREAS AND STRUCTURES

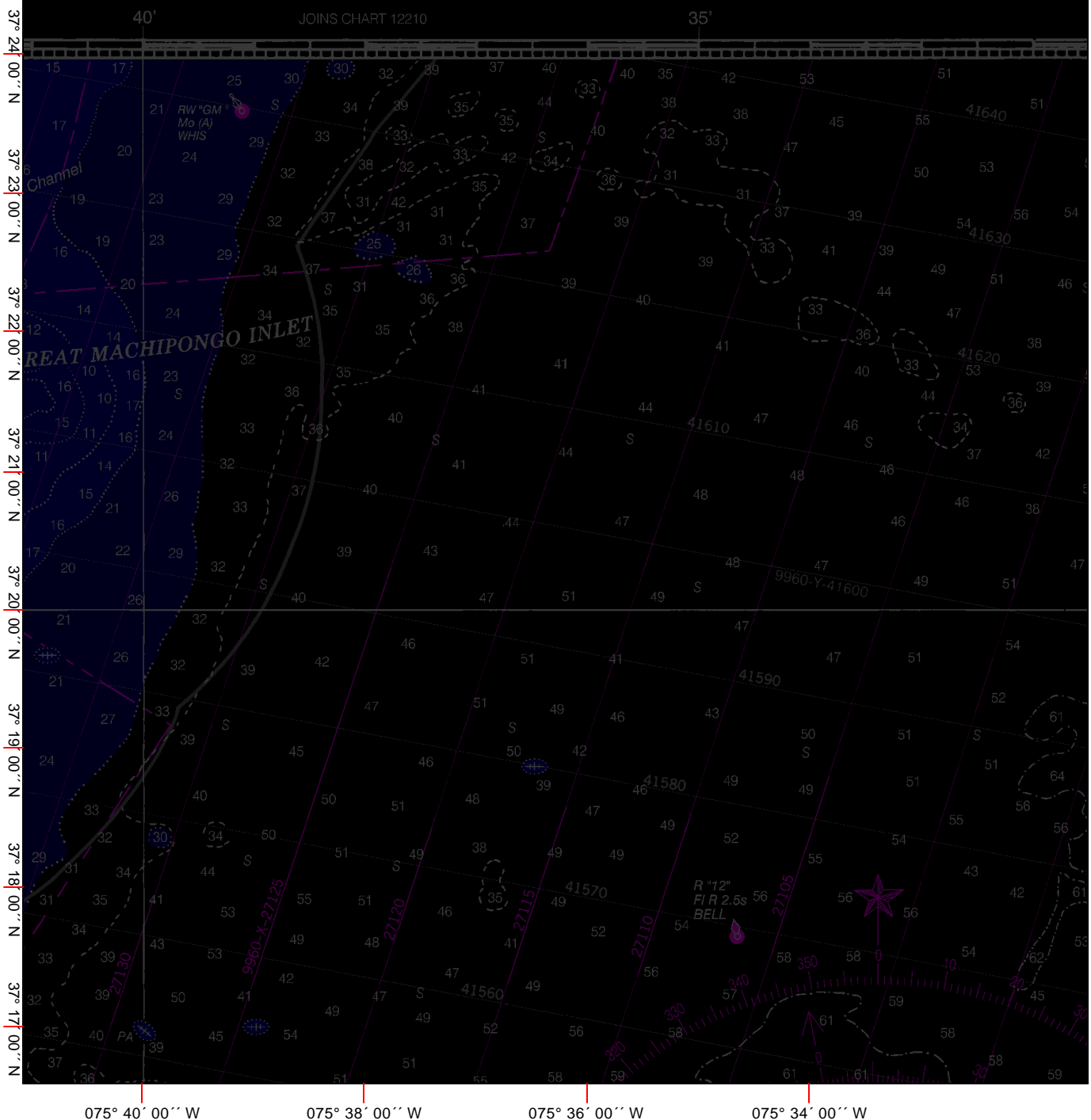
Mariners are warned that numerous uncharted duck blinds and fishing structures, some submerged, may exist in the fish trap areas. Such structures are not charted unless known to be permanent.

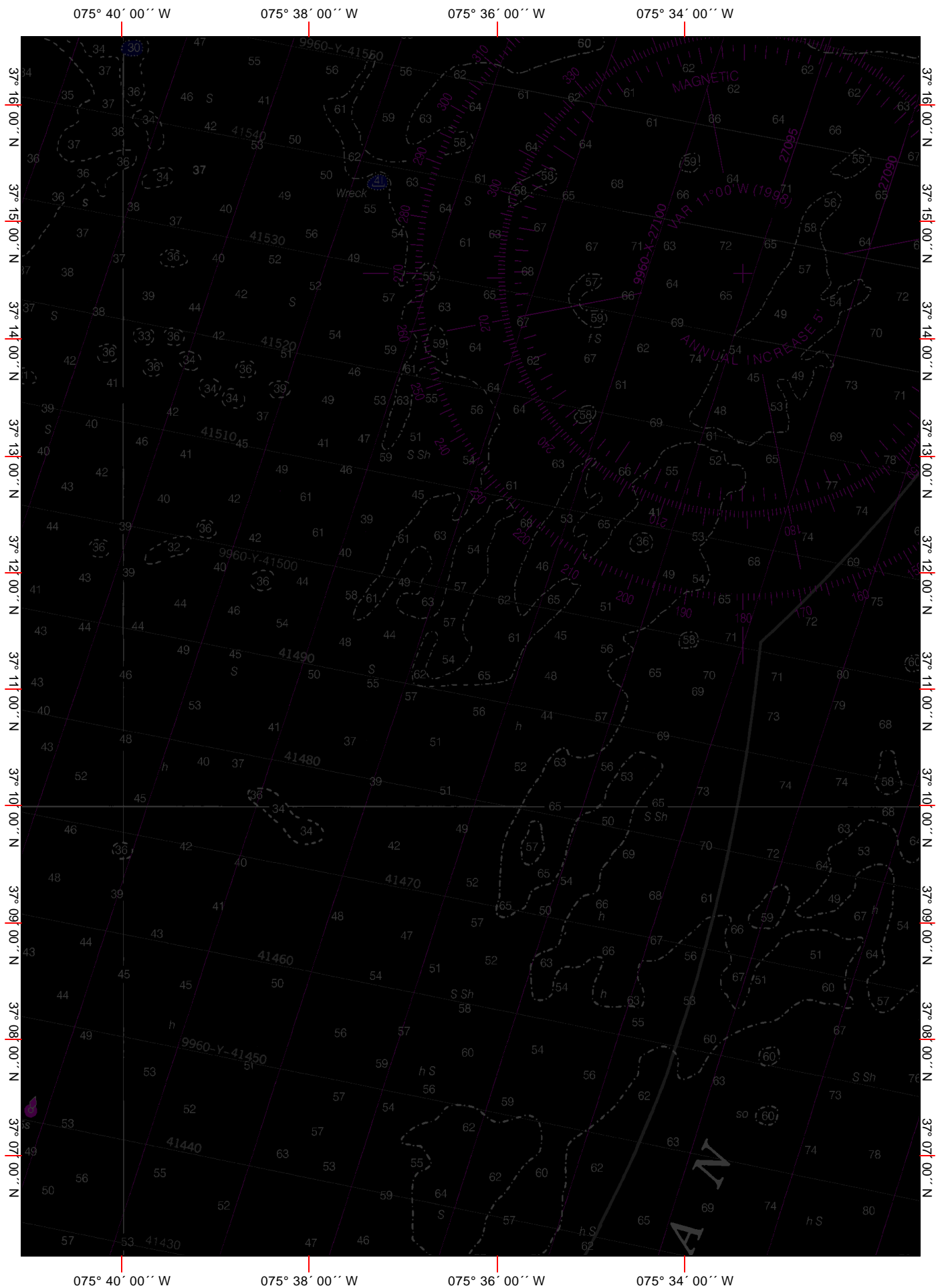
Regulations to assure clear passage to and through dredged and natural channels and to established landings are prescribed by the Corps of Engineers in the Code of Federal Regulations.

Definite limits of fish trap areas have been established in some areas and those limits are shown thus: _____

Where definite limits have not been prescribed the location of fishing structures is restricted only by the regulations.

SOUNDINGS IN FEET



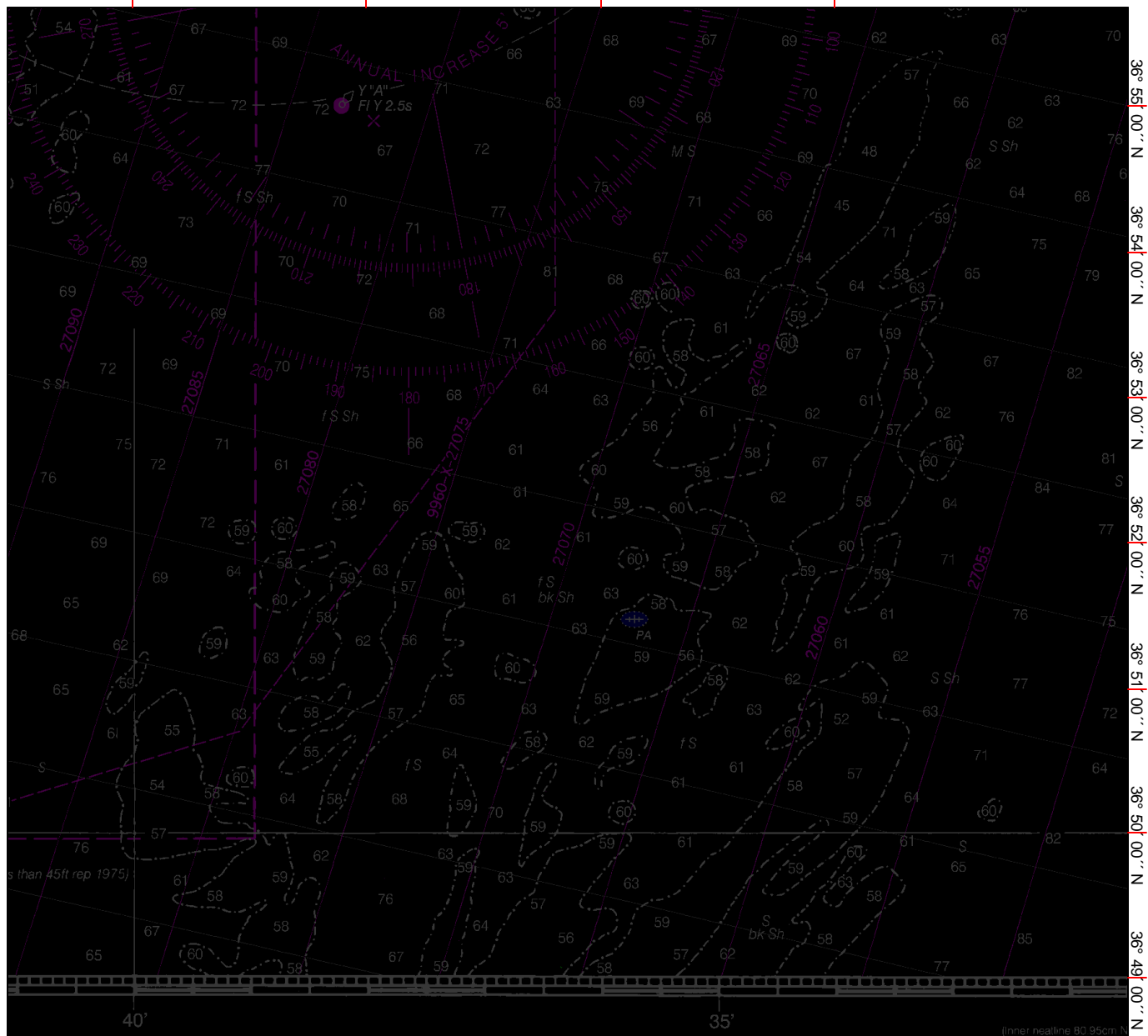


075° 40' 00" W

075° 38' 00" W

075° 36' 00" W

075° 34' 00" W



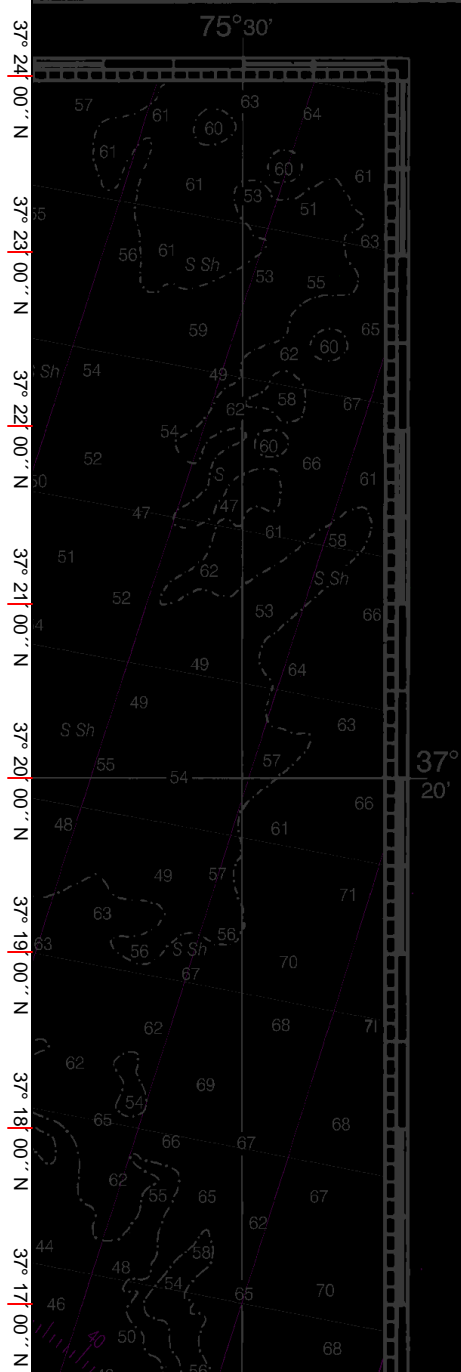
8	9	10	11	12	13	14	15	16	17
48	54	60	66	72	78	84	90	96	102
15	16	17	18	19	20	21	22	23	24
25	26	27	28	29	30	31			

Chesapeake Bay Entrance

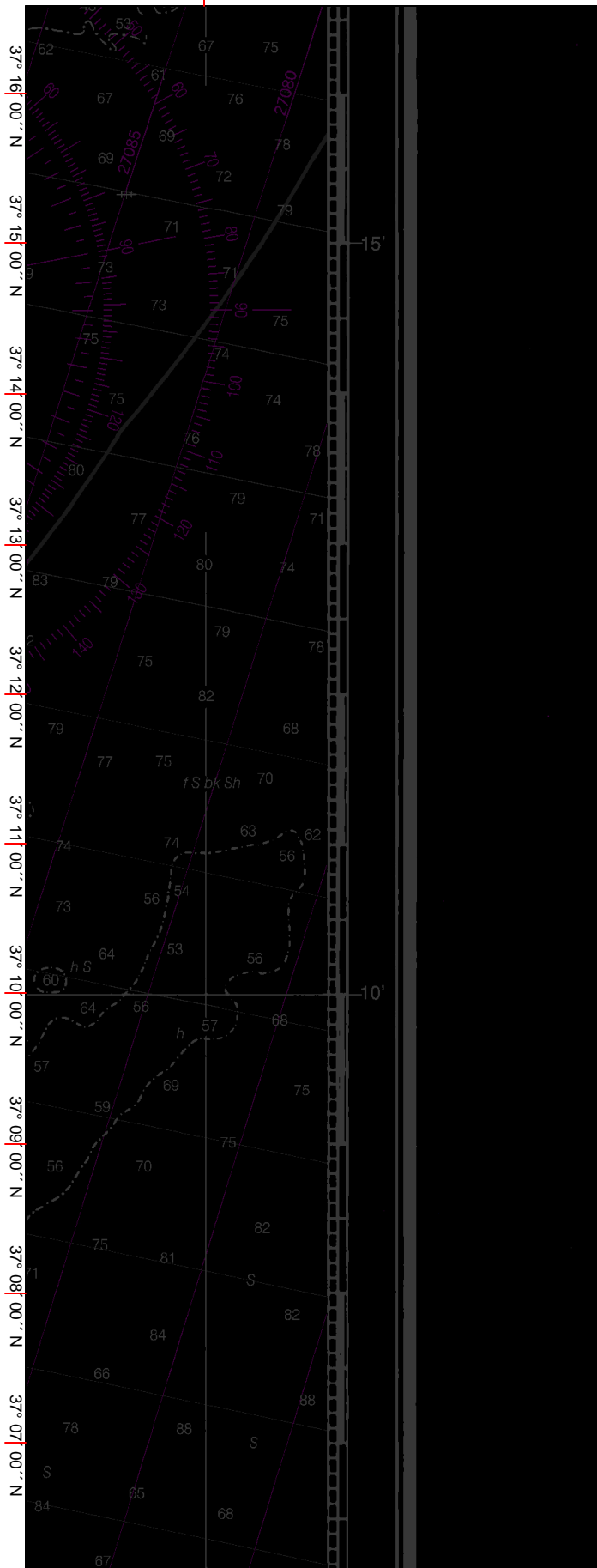
SOUNDINGS IN FEET - SCALE 1:80,000

LO

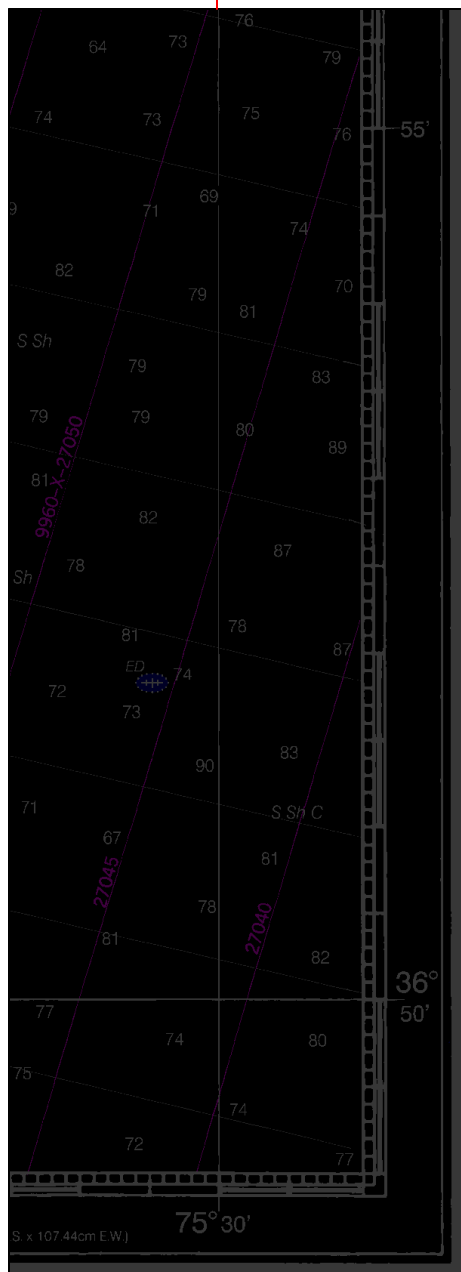
Nautical Chart Catalog No. 1, Panels D, E



075° 30' 00" W



075° 30' 00'' W



ED NO. 70



NSN 7642014010300
NIMA STOCK NO. 12AHA12221

12221

RAN-C OVERPRINTED

2-1-98

12221
9/01/98



Chart Number: 12221_1 Revision Number: 0 Cleared Date: Date Printed: 08/06/2001 NOT FOR NAVIGATION

Page: E6