

UNDERSEA FEATURE NAME PROPOSAL

Ocean or Sea: [East Sea](#)

Name Proposed: [Usan Ridge](#)

Coordinates: A – of midpoint or summit: Lat. [38° 02' N](#) Long. [131° 24' E](#)
[75](#) kilometres in [NE](#) direction from [Ulleung Do](#) ('Do' means Island)

B – extremities (if linear feature):

Lat. [37° 52' N](#) to Lat. [38° 01' N](#)
Long. [131° 09' E](#) to Long. [131° 43' E](#)

Description (kind of feature): [Ridge](#)

Identifying or categorizing characteristics (shape, dimensions, total relief, least depth, steepness, etc.):

[Usan Ridge](#) is an elongated feature on the southern part of [Ulleung Plateau](#). The feature lies East-West, with a summit of irregular topographic relief ranging from about 950m to 1200m. The least depth is 554m, while the base ranges from 1500m to 1800m. The general configuration is elongated with varying degrees of complexity on its steep sides.

Associated features:

Chart reference:

Shown with name on chart No. _____

Shown but not named on chart No. [102A](#) (scale 1:0.75 mln), [138](#) (1:0.5 mln) and [B4623](#) (Bathymetric chart, 1:0.5mln) Published by Korea

Not shown but within area covered by chart No. _____

Reason for choice of name (if a person, state how associated with the feature to be named):

[Usan](#) is the ancient name of [Ulleung Do](#), prior to the 5th Century of the Common Era.

Discovery facts:

Date: [Apr. - Nov. 1996](#) by (ship): [Haeyang 2000](#)

By means of (equipment): [Multi-Beam Echosounder \(SeaBeam 2100\)](#)

Navigation used: [DGPS \(Trimble DGPS 4000DS\)](#)

Estimated positional accuracy in nautical miles: [± 0.0027 miles](#)

Description of survey (track spacing, line crossings, grid network, etc.):

[The line spacing of survey tracks was less than 400m in order to ensure 100 % coverage of our multi-beam system.](#)

Nature and repository of other survey activities (dredge samples, cores, magnetics, gravity, photographs, etc.):

[Gravity and magnetic surveys were also conducted.](#)

Supporting material (enclose, if possible, a sketch map of the survey area, profiles of the features, etc., with reference to prior publication, if any):

[See attached bathymetric maps, 3-D image maps, and survey track chart.](#)

Submitted by: [The Korea Committee on Marine Geographical Names, Republic of Korea](#)

Date: [April 25, 2008](#)

Address: [1-17, 7-ga Hang-dong, Jung-gu, Incheon, 400-800, Republic of Korea](#)

[Tel : +82 32 885 3825](#)

[Fax : +82 32 885 3088](#)

Concurred in by (if applicable):

National Authority (if any): [National Oceanographic Research Institute](#)

Address: [1-17, 7-ga Hang-dong, Jung-gu, Incheon, 400-800, Republic of Korea](#)

[Tel : +82 32 885 3825](#)

[Fax : +82 32 885 3088](#)

Note: this form should be forwarded, when completed:

a) **If the undersea feature is located in territorial waters :-**

to your "National Authority of Undersea Feature Names" or, if this does not exist or is not known, either to the International Hydrographic Bureau or to the Intergovernmental Oceanographic Commission (see addresses below) ;

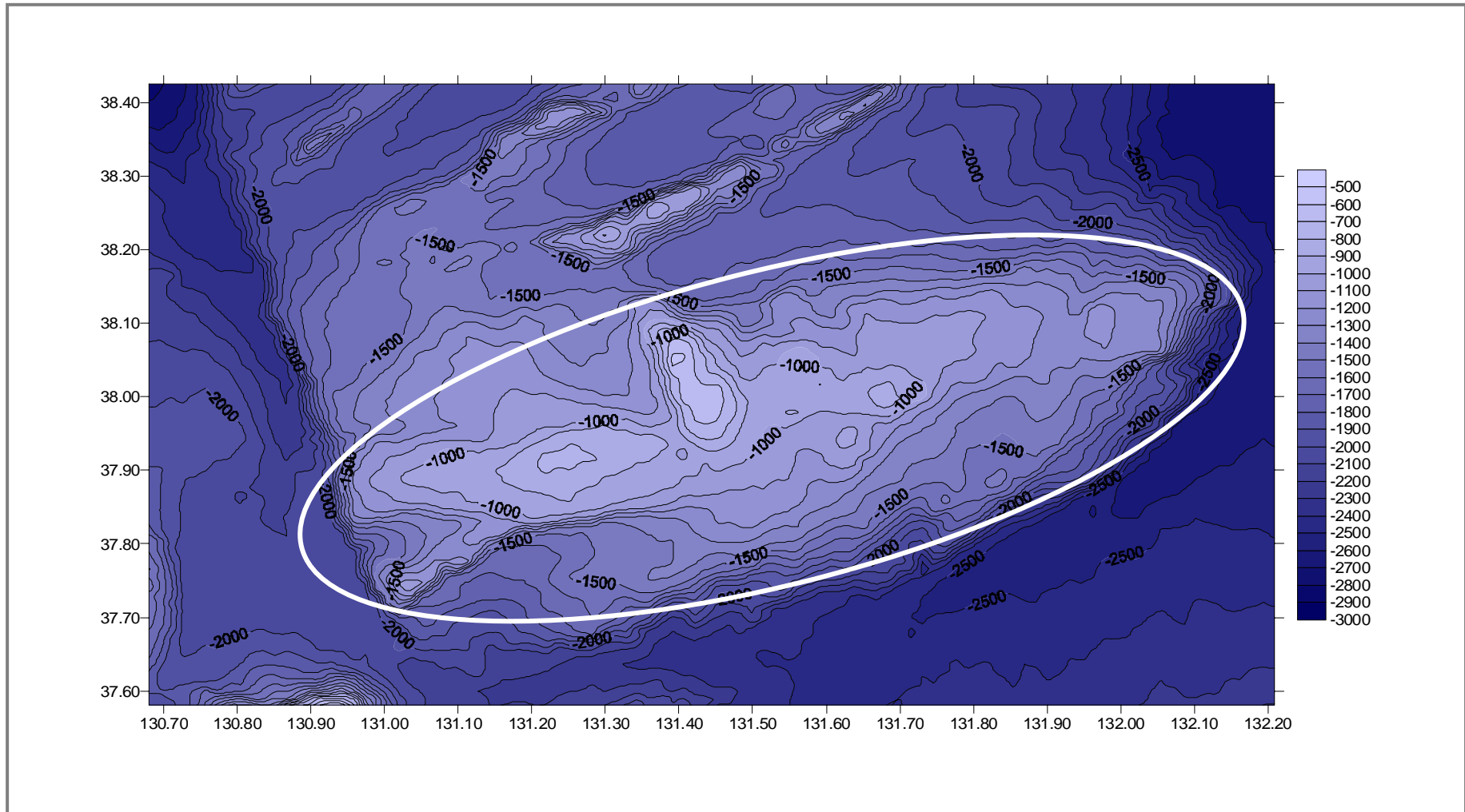
b) If the undersea feature is located in international waters :-

to the International Hydrographic Bureau or to the Intergovernmental Oceanographic Commission, at the following addresses :

International Hydrographic Bureau
4, quai Antoine 1er
B.P. 445
MC 98011 MONACO CEDEX
Principality of MONACO
Fax: +377 93 10 81 40
E-mail: info@ihb.mc

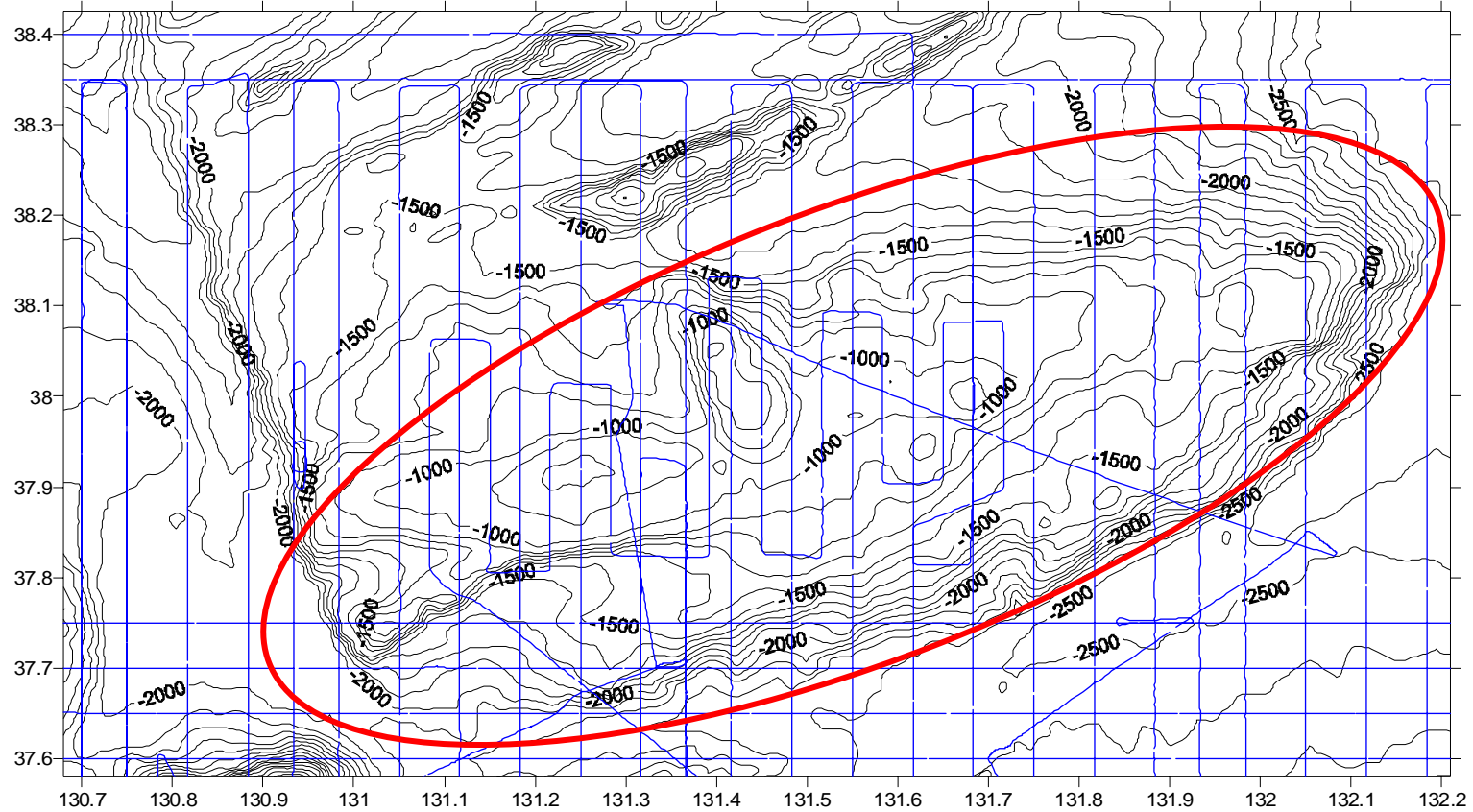
Intergovernmental Oceanographic Commission
UNESCO
Place de Fontenoy
75700 PARIS
FRANCE
Fax: +33 1 45 68 58 12
E-mail: info@unesco.org

Usan Ridge



Bathymetric contour map of Usan Ridge(Contour interval : 100m)

Usan Ridge



The track lines in survey area

Usan Ridge

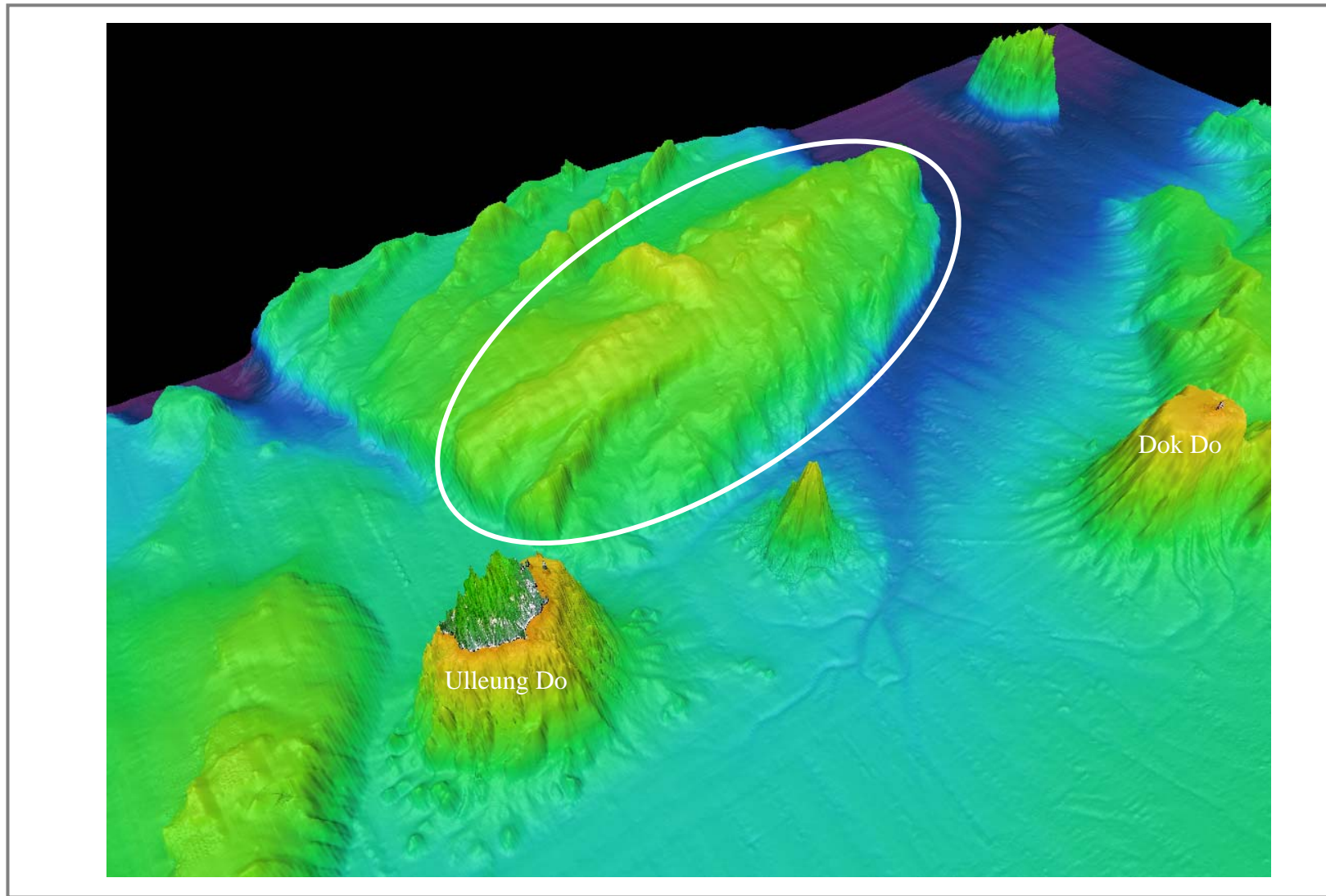


Image map of Usan Ridge

Usan Ridge

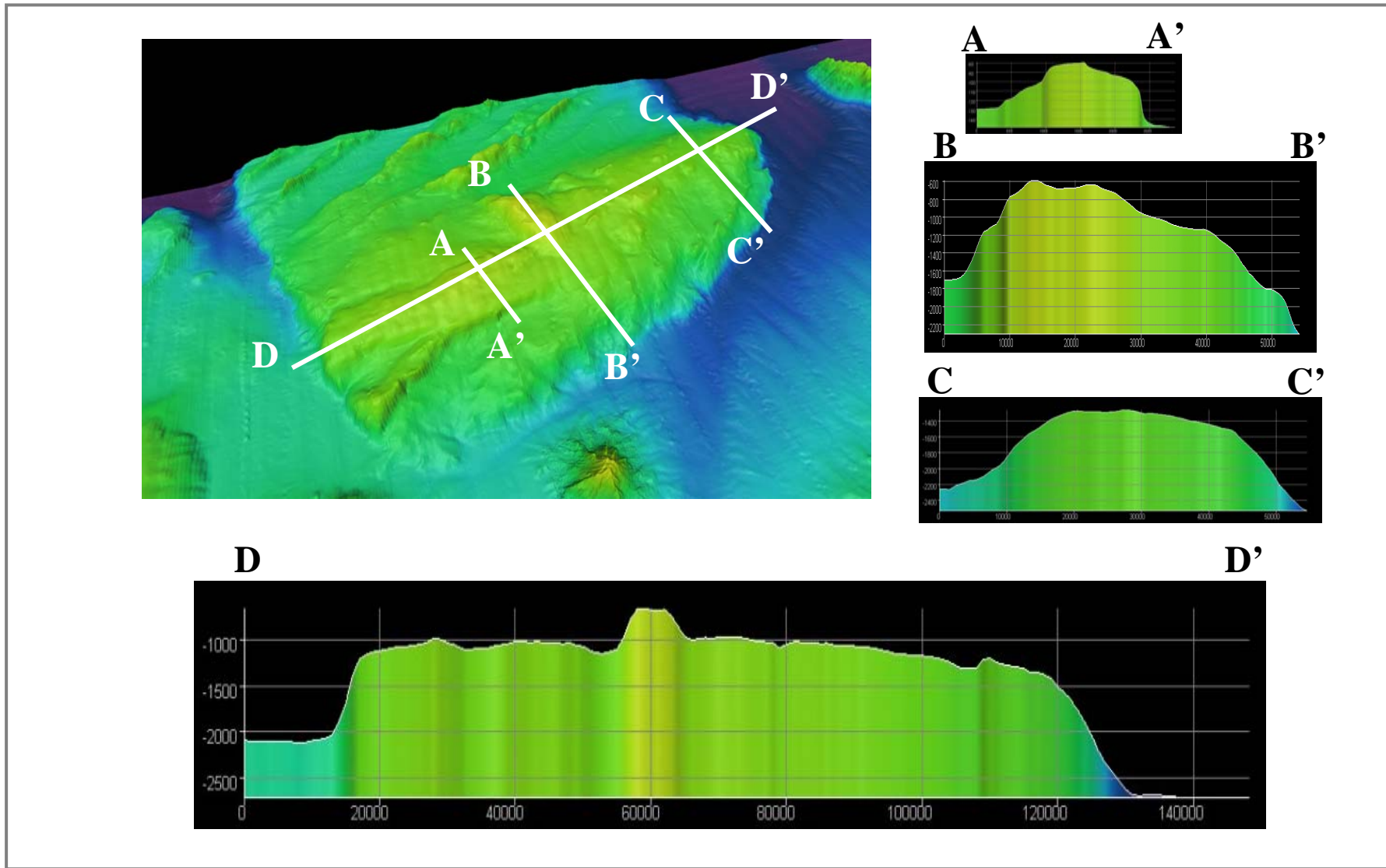


Image map and profile across Usan Ridge