

# North Sea Hydrographic Commission

## North Sea Hydrographic Commission report to IRCC11 GENOA June 2019

Chair: Steve Timmermans (Belgium)

Vice-chair: Hilmar Helgason

Members: Belgium, Denmark, France, Germany, Iceland, Netherlands, Norway, United Kingdom

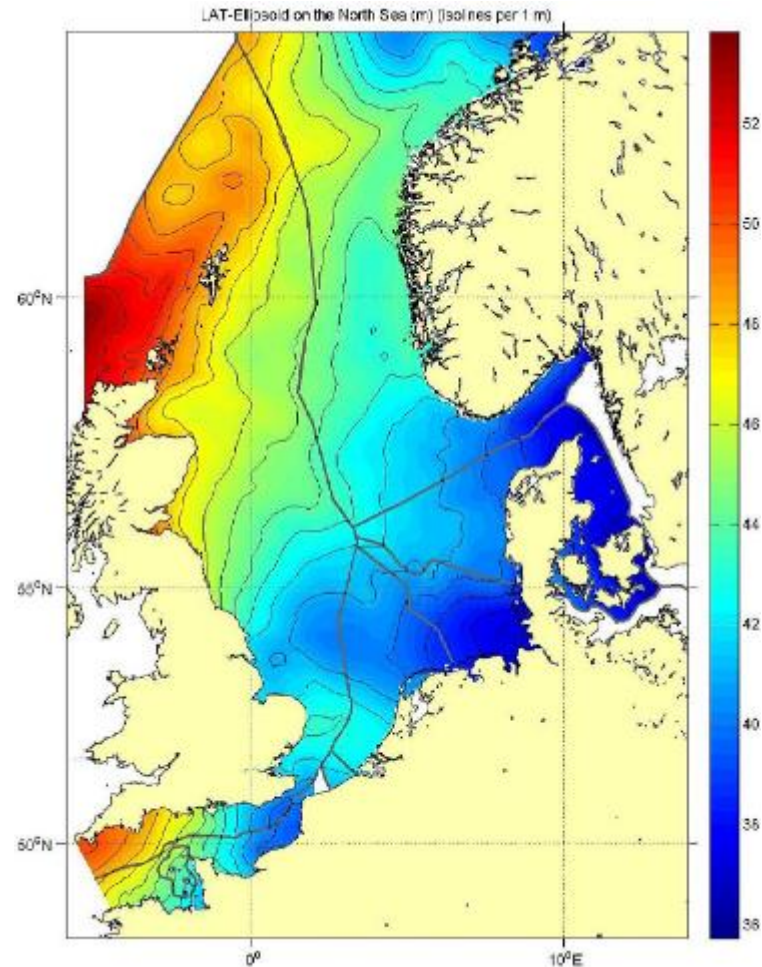
Last meeting 33<sup>rd</sup> Conference: 27<sup>th</sup> and 28<sup>th</sup> March 2017, Ostend, Belgium

# Activities 2017-2019

- ❖ 22nd Tidal WG, Ostend, 25-26 Oct 2017
- ❖ 8th Resurvey WG, Paris, 18-19 Sep 2018
- ❖ NS ICCWG, correspondence
- ❖ 33rd NSHC Conference, Ostend, 27-28 Mar 2018
  - 34th NSCH Conference, Reykavik, 26-27 Mar 2020
- ❖ IRR10 recommendations, actions and decisions

# 22<sup>nd</sup> Tidal WG (1/3): Common Reference Surface

WP Item 18/01:  
Improve North Sea  
wide realization of  
reference surfaces



Thanks to R. Kuilman NLHO



Vlaanderen  
is maritiem

# 22<sup>nd</sup> Tidal WG (2/3) : Common Reference Surface

	BE	DK	FR	GE	NL	NO	UK	SW	IC
BE									
DK	1								
FR	2	1							
GE	1	4	1						
NL	4	1	1	4					
NO	1	2*	1	1	1				
UK	3	3	4	3	3	2*			
SW	1	2*	1	1	1	2*	1		
IC	1	1	1	1	1	1	1	1	

Legend:

1: no common LAT boundary

2: differences on a common boundary but not checked

2\*: differences on a common boundary, not checked, different CD

3: differences on a common boundary checked to be not significant

**4: differences on a common boundary checked to be outside '1% norm'**

# 22<sup>nd</sup> TWG (3/3): Common Reference Surface - Results

Next steps for WP Item 18/01: **NO PROGRESS**

- ❖ Revisit the usefulness of the 1% norm
  - Now arbitrarily chosen: LAT difference/ depth
  - Make a proposal for something more practical
  
- ❖ Continue studying differences with the aim to improve the LAT surfaces
  - Examine the origin of the observed differences
  - Make error estimates on each reference surface
  - Compare whole reference surfaces iso. only borders

# 8<sup>th</sup> Resurvey WG (1/2)

- ❖ Updated TOR
  - Merge with Dover straits area resurvey WG
  - Include alternative survey means
  
- ❖ Exchange of updated resurvey plans
  - Main focus is on critical areas for resurvey and other areas of mutual interest
  - Agreed on common categories of resurvey intervals :0-1 years/as required, 1-6 years, 6-12 years, 12-25 years, >25 years
  
- ❖ Port areas excluded from the area of interest of RWG

# 8<sup>th</sup> Resurvey WG (2/2)

- ❖ Evaluation of Risk assessment will start on the Dover Strait Area
  - ‘And then?’
- ❖ Big progress in use of SDB and new generations of Bathy Lidar Equipment by NSHC members
  - Significant experience with these techniques is gathered outside of NSHC area
- ❖ Evaluation of IHO guidance document on Crowd Sourced Bathymetry
  - Challenge: quality CSB data vs existing survey data

# North Sea Int. Chart Coordination WG

- ❖ ENC coverage is complete, except for Greenland
- ❖ ENC are being rescheduled to grid based by NL, GE and DE
- ❖ All overlaps and gaps are low risk and pose no demonstrable risk to navigation
- ❖ Issue overlaps between 5-30 mtr in USB1-3
  - UB1=3; UB2=9; UB=9 ( Dec 2018)
  - Raised during WEND 8; extend the buffer overlap?



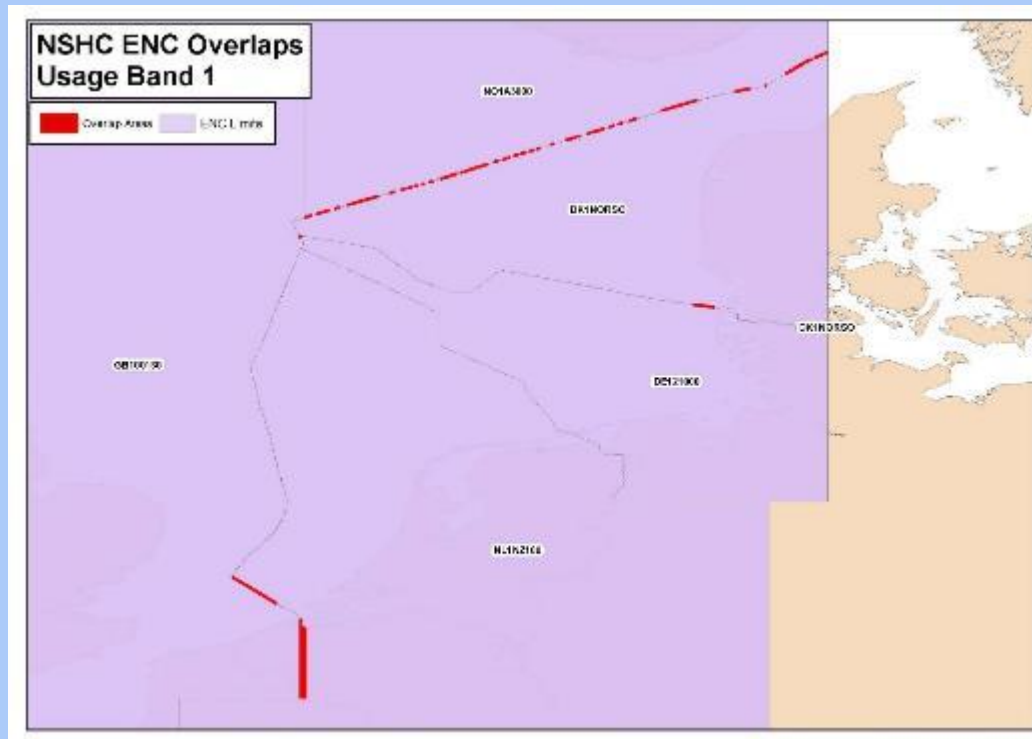
# Existence of overlapping ENC's that may have a possible impact on safe navigation

## Overview

### NSHC ENC OVERLAPS

Usage Band 1

3 ENC overlaps





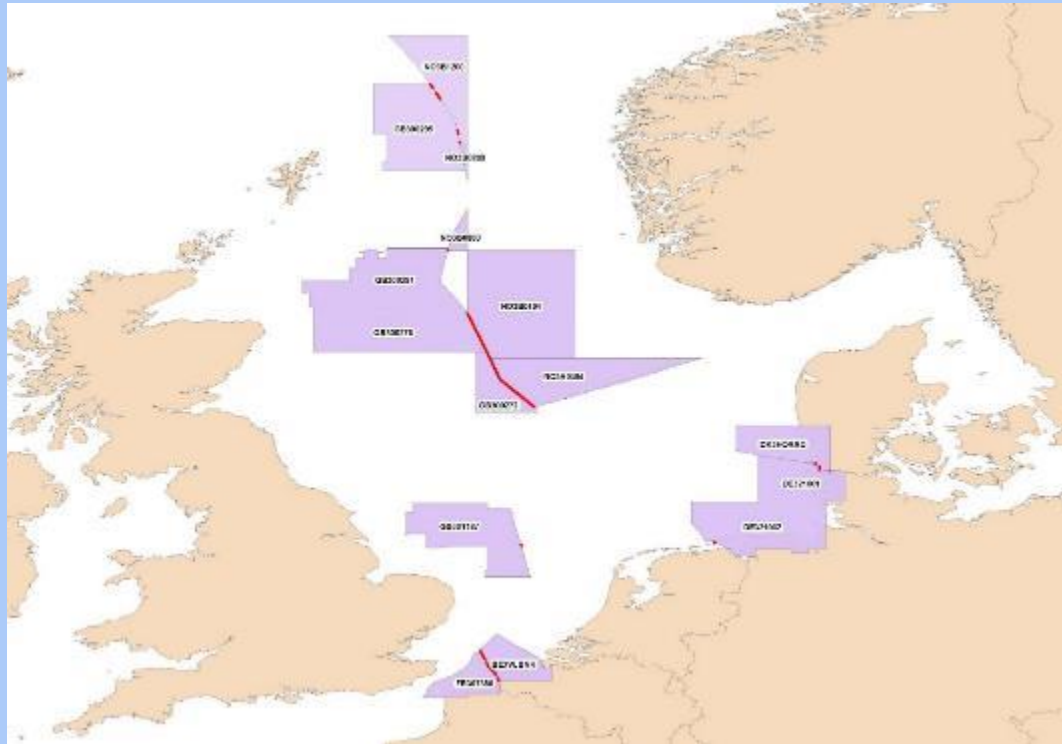
# Existence of overlapping ENCs that may have a possible impact on safe navigation

## Coastal

### NSHC ENC OVERLAPS

Usage Band 3

9 ENC overlaps



# 33<sup>nd</sup> NSHC: Open AP and decisions (1/2)

- ❖ 1/2018: Crowd sourced data: RWG investigates how CSB can support work of NSHC;
- ❖ **2/2018: DE organises workshop on sharing knowledge and experiences of Contouring algorithms; CLOSED**
- ❖ 6/2016: Vertical reference (LAT) comparison: in accordance with AP 18/1 of TWG;
  - Including validity of 1% norm

# 33<sup>nd</sup> NSHC: Open AP and decisions (2/2)

- ❖ 3/2010: overview and harmonization of resurvey schemes, availability on NSHC.pro for whole NSHC region
- ❖ 6/2014: North Sea wide Risk Assessment, including Dover straits
  - There will be no North Sea wide Risk assessment, but the RWG will reconsider this for the DSSS area due to its specific characteristics. (see AP10 of 7<sup>th</sup> RWG)
- ❖ 8/2014: MS nominate contact person for MSDI WG
  - list is not complete

# IRRC10 Recommendations (1/4)

- ❖ Recommendation 1-7, 13-14, 21
  - No collective deliverable, responsibility individual MS
- ❖ Recommendation 8 on CATZOC for C-55
  - Responsibility individual nation, but action for NSHC 34
- ❖ Recommendation 9 on overlap and one year clock
  - No overlap with demonstrable risk to navigation

# IRRC10 Recommendations (2/4)

- ❖ Recommendation 10 and 11 on management of overlap
  - Discussed during WEND 8, issue for NS ICCWG and NSHC 34
- ❖ Recommendation 12 on ENC schemes
  - Done through chair NS ICCWG
- ❖ Recommendation 15-17 on data gathering for CSB
  - Action for NSHC RWG and discussion during 34<sup>th</sup> NSHC

# IRRC10 Recommendations (3/4)

- ❖ Recommendation 18-19 on shallow water bathy to GEBCO and GEBCO
  - Integral to NSHC conference and EMODNET (HRSM)
- ❖ Recommendation 20 on populating CATZOC and DQWG
  - Nil inputs received, but OBE as DQWG developed own proposal
- ❖ Recommendation 22 on TWCWG and CB
  - NSHC has no CB-programs



# IRRC10 Recommendations (4/4)

- ❖ Recommendation 22 on tide gauges and current meters
  - Action for NSHC TWG

# IRRC10 Actions

- ❖ Action1, 2, 6-19
  - No action required by NSHC
- ❖ Actions 3-5 on resolution 2/1997
  - Action 3: completed
  - Action 4-5: awaiting revised draft

# IRRC10 Decisions

- ❖ No addition NSHC actions resulting from IRCC10 decisions

# Action required?

The IRCC is invited to note the report of the NSHC.

## Thank you for your attention