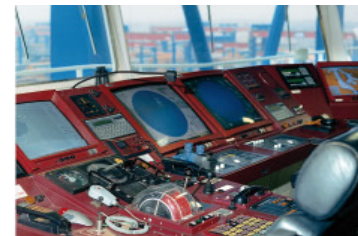




BUNDESAMT FÜR  
SEESCHIFFFAHRT  
UND  
HYDROGRAPHIE

# Example of project for acquisition of data

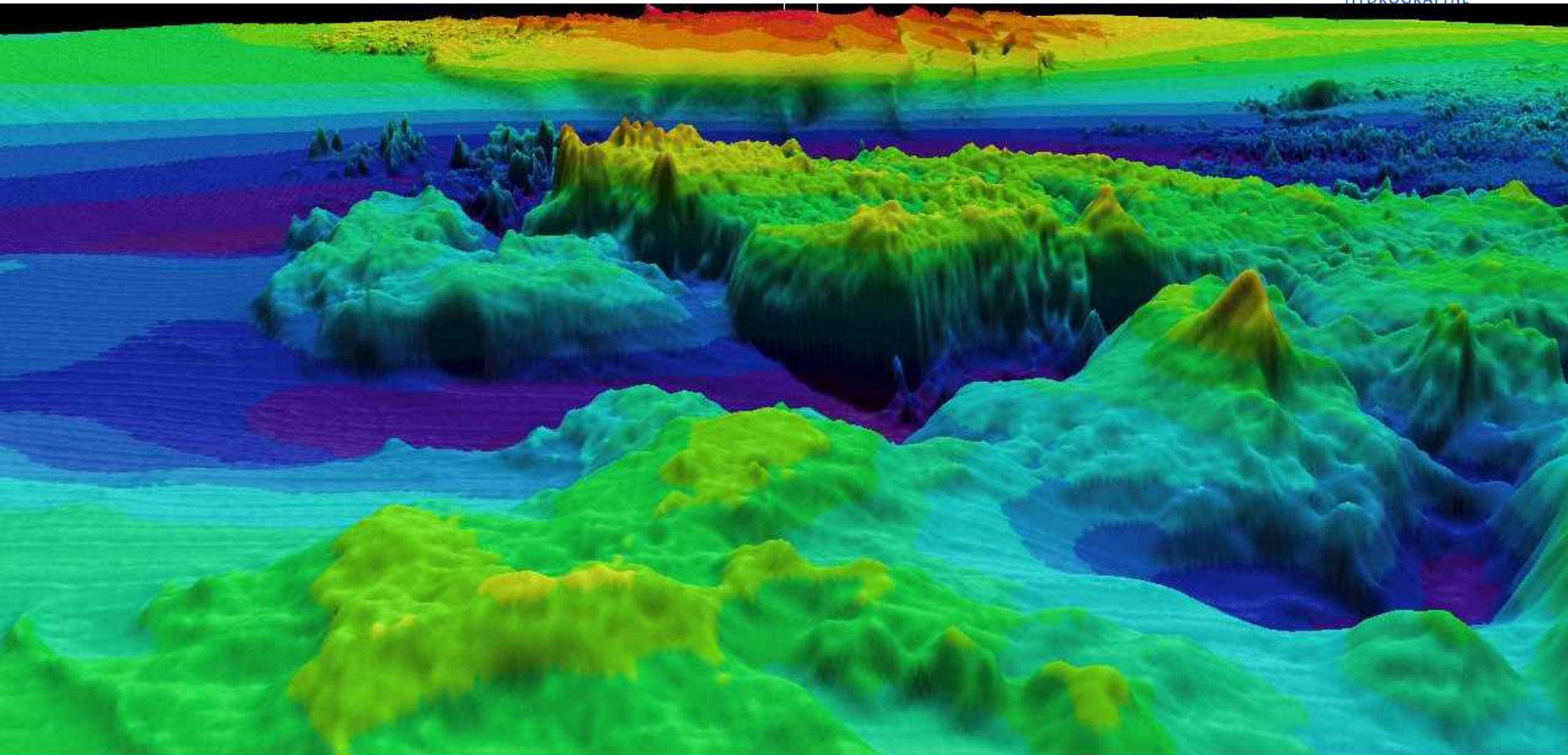


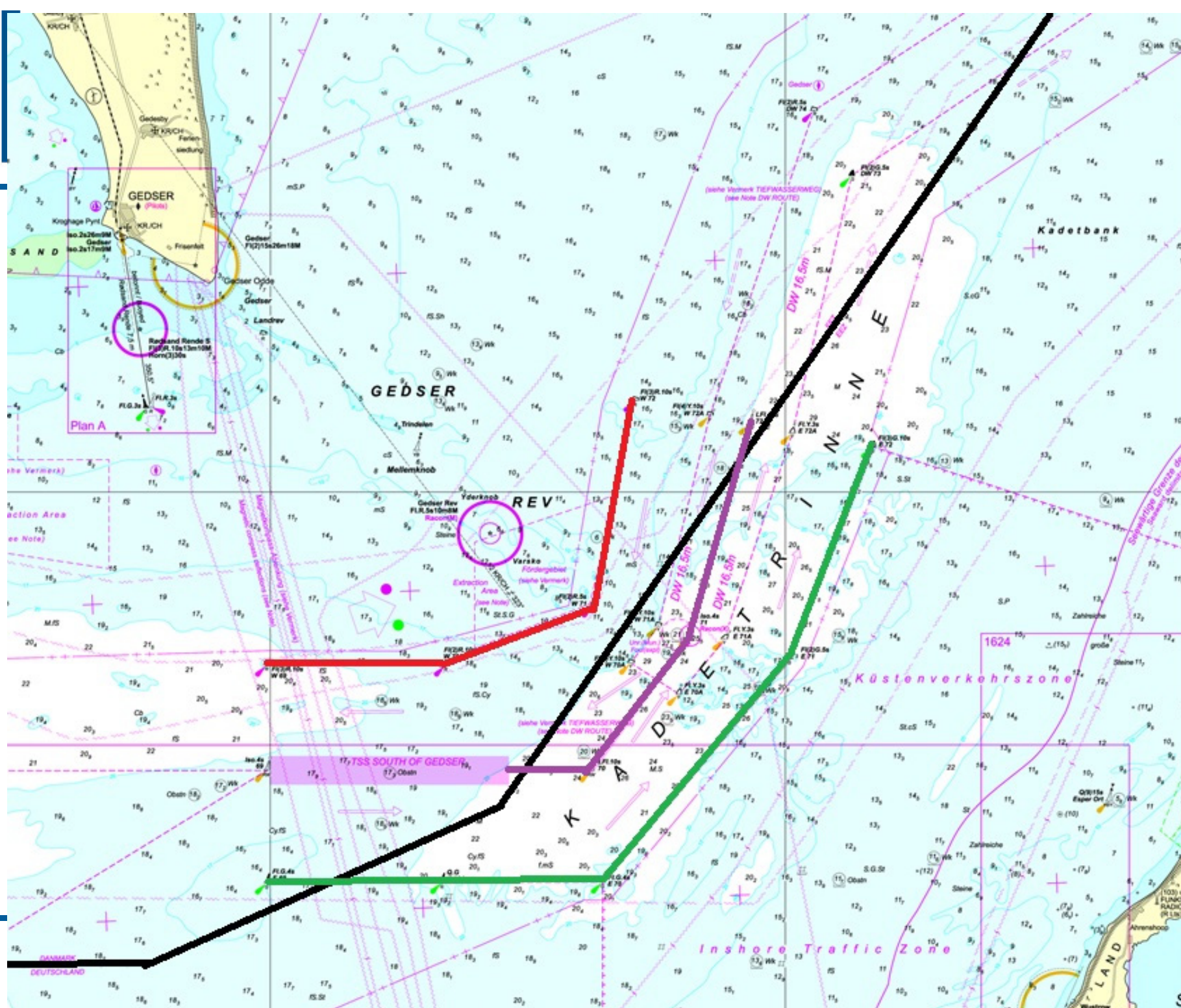
Thomas Dehling

# Co-operation Denmark - Germany



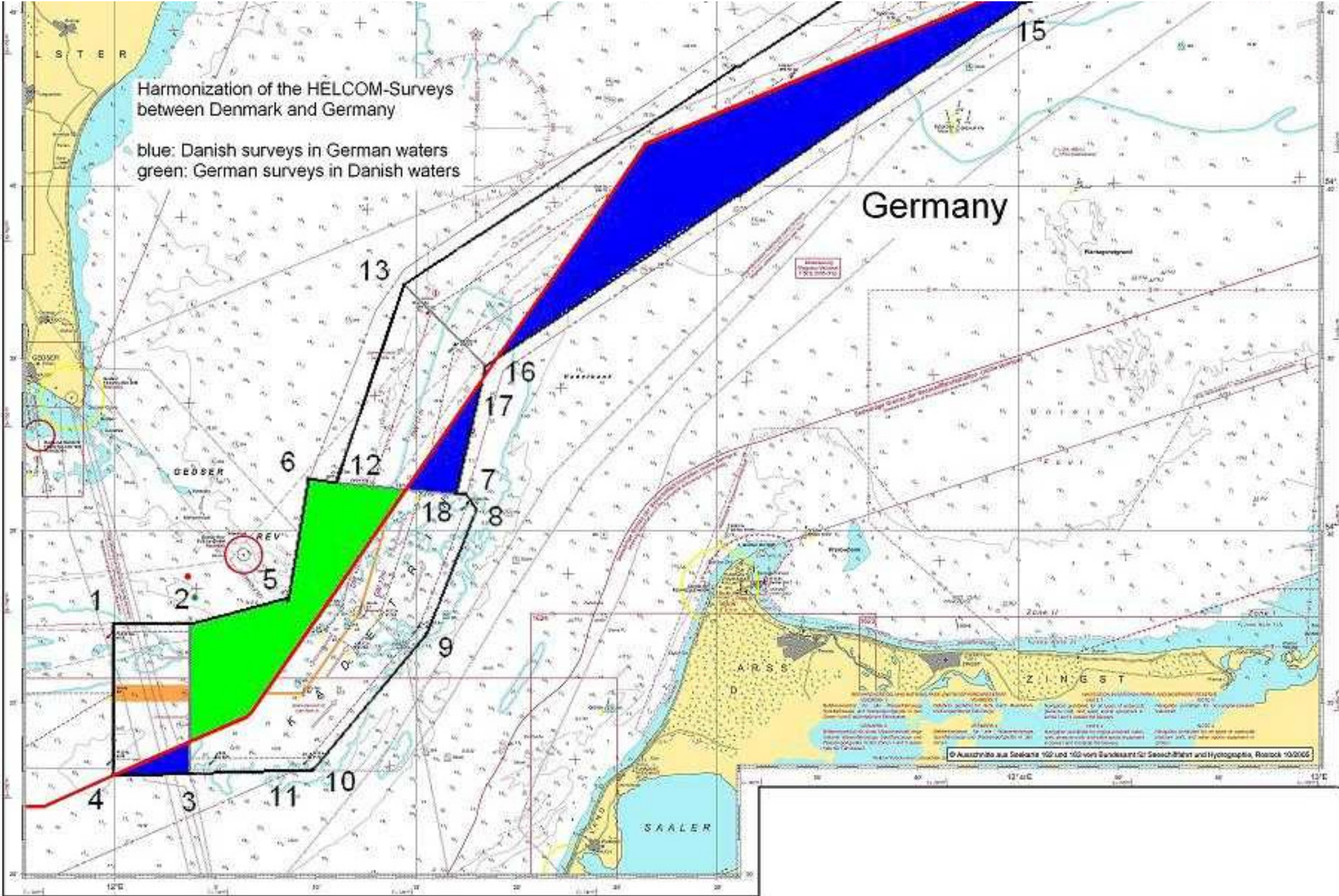
BUNDESAMT FÜR  
SEESCHIFFFAHRT  
UND  
HYDROGRAPHIE





Harmonization of the HELCOM-Surveys  
between Denmark and Germany

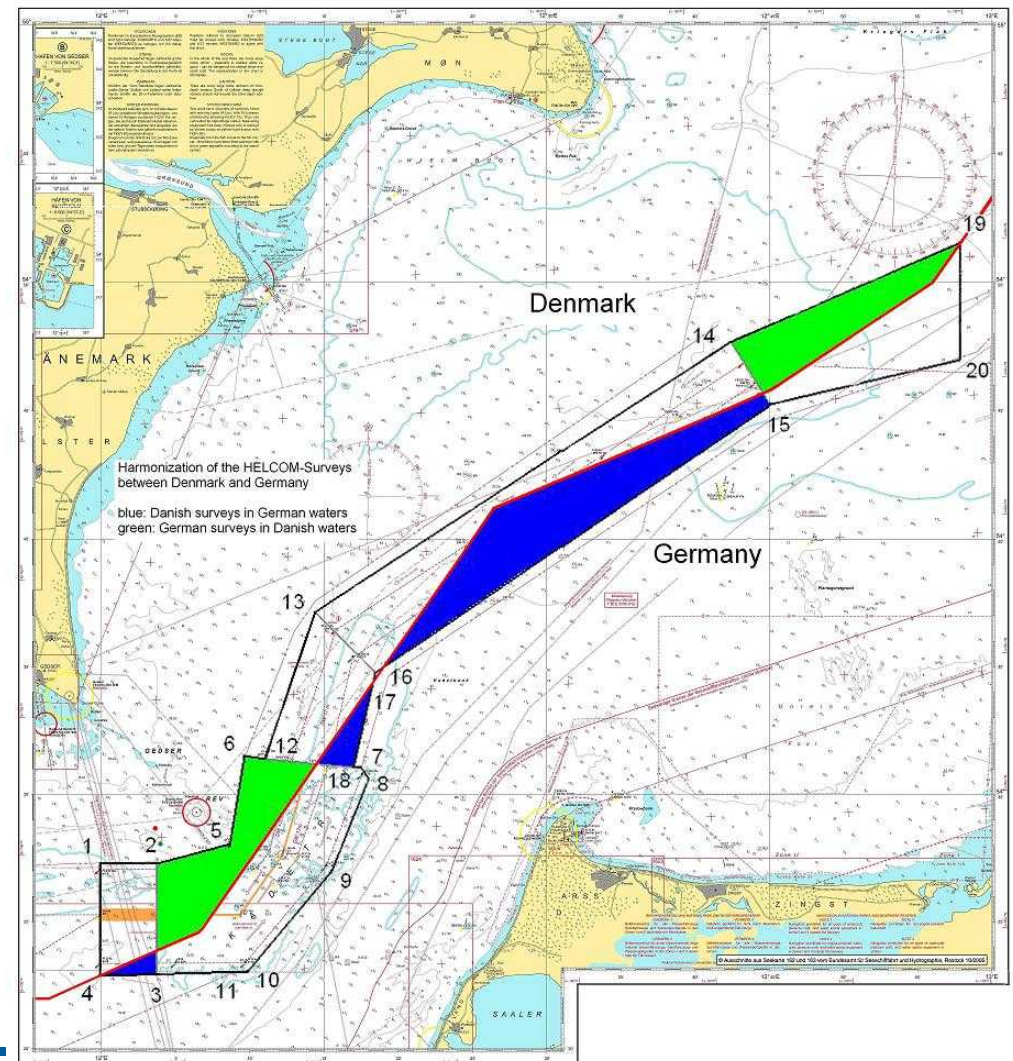
blue: Danish surveys in German waters  
green: German surveys in Danish waters

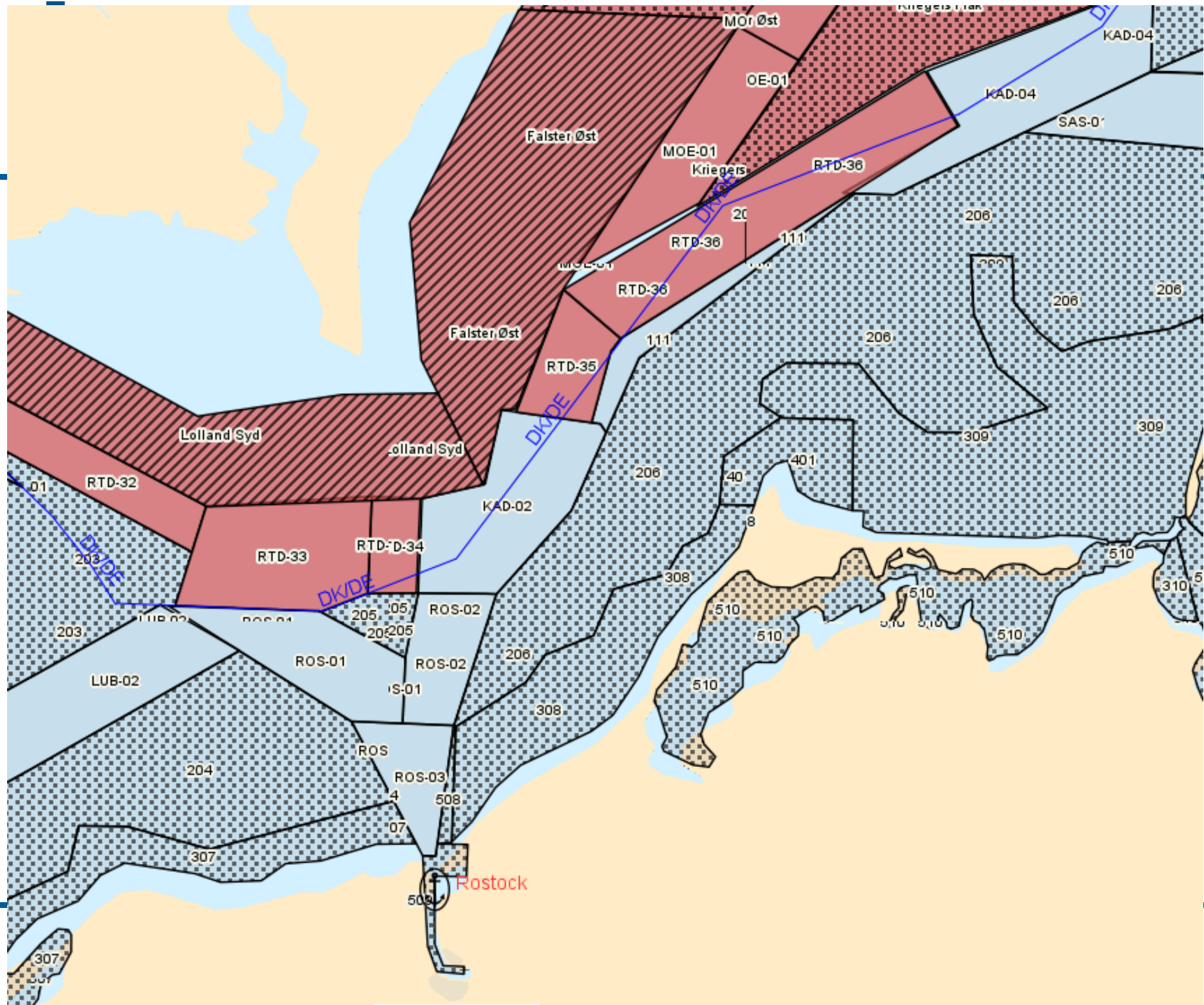


## Kadetrinne

- multibeam
  - sidescan sonar
- to ensure the detection of smaller objects (1m<sup>3</sup>)

change of survey tasks  
between Denmark and Germany







# MARITIME AFFAIRS

European Commission > Maritime affairs > Integrated maritime policy > Sea basin regional strategies > Sea basin strategy: North Sea

Maritime Affairs

Home

Blue growth

- Aquaculture
- Coastal tourism
- Blue biotechnology
- Ocean energy
- Seabed mining

International ocean governance

Marine knowledge

Skills & ocean literacy

Maritime spatial planning

Integrated maritime surveillance

Maritime Security Strategy

## Sea basin strategy: North Sea

### Harnessing Europe's maritime potential

- With Blue Economy figures for the North Sea



### Other sources of information

- North Sea section on the Maritime Forum
  - Projects
  - Background information
  - Workshop or working group documents
  - Events
- European Atlas of the Seas

### Related content

- Press releases
- Studies
- Recommended links
- Events
  - Workshop on strategic cooperation on Blue Growth in the North Sea - The Hague, 20 June 2016
    - Background document: Strategic Cooperation on Blue Growth in the North Sea

Share 0

Search

Search this website

Search all news

Twitter

**ICES**  
@ICES\_ASC

Don't forget: #ICESASC18 is calling for abstracts! Deadline for submissions: 19 March. Share your science and join us in #Hamburg in September! [bit.ly/2DhRTYI](http://bit.ly/2DhRTYI) [pic.twitter.com/9oQrpYk3sp](https://pic.twitter.com/9oQrpYk3sp)

Retweeted by EU Maritime & Fish

# GEBCO

General Bathymetric Chart of the Oceans



## Nippon Foundation-GEBCO Seabed 2030 Project

The Nippon Foundation and GEBCO are pleased to announce the launch of **Seabed 2030**. Seabed 2030 is a collaborative project between GEBCO and the Nippon Foundation with the aim to facilitate the complete mapping of the ocean floor by the year 2030. It builds on more than 100 year's of GEBCO's history in global seafloor mapping.

The launch of the project was announced by Mr Yohei Sasakawa, Chairman of The Nippon Foundation, at the United Nations Ocean Conference in June 2017.





### Nippon Foundation-GEBCO Seabed 2030 project operational

NF has pledged \$2 million US dollars per year as seed money – and is calling on the resources of the international maritime community for additional support.

significant contribution to the UN's Sustainable Development Goal 14: 'to conserve and sustainably use the oceans, seas and marine resources for sustainable development'.

On 20 February, just seven months after the launch of The Nippon Foundation-GEBCO Seabed 2030 Project at the United Nations in New York City, the first Director of Seabed 2030 Project has been introduced: Mr. Satinder Bindra.



BUNDESAMT FÜR  
SEESCHIFFFAHRT  
UND  
HYDROGRAPHIE



From left to right:

- Mr Satinder Bindra, Director of the Seabed 2030 project;
- Mr Mitsuyuki Unno, Exexutive Director, the Nippon Fondation; Professor Martin Jakobsson, Stockholm University;
- Vice Admiral Shin Tani, Chairman, GEBCO Guiding Committee;
- Bjorn Jalving, Executive Vice-President, Kongsberg Maritime;
- Dr Vicki Ferrini, Lamont-Doherty Earth Observatory; David Millar, Fugro, Government Services Director, Americas.

# NorthSEE

## A North Sea Perspective on Shipping, Energy and Environment Aspects in MSP

<< < Overview > >>

S.PRO WAS INVOLVED IN:  
> [Development & Application](#)



FUNDING PROGRAMME: [Interreg North Sea Region](#)  
LEAD PARTNER: [German Federal Maritime and Hydrographic Agency](#)  
TOTAL BUDGET: € 4 million  
PROJECT DURATION: 2016–2019  
TOPIC: [Maritime policy and blue growth](#)  
[www.northsearegion.eu/northsee/](http://www.northsearegion.eu/northsee/)