

Effects of amended paper chart production practice

Assessment of legal and operative aspects

Legal framework

Amend the legal framework

- The amended SOLAS regulation V/19 requires all newly built passenger ships of 500 gross tonnage and upwards, as well as newly built cargo ships of 3,000 gross tonnage and upwards engaged on international voyages to be fitted with ECDIS.

Legal framework

Amend the legal framework

- Currently no support from ship owners
- Take into account lesson learnt from ECDIS introduction
- Develop monetary benefits for ship owners, insurance
- A process lasting many years

ENC as source to print back-up charts

Paper chart coverage

Paper chart layout

Paper chart updates

Paper chart provision

- INT chart coverage
- Alternatives are costly

ENC as source to print back-up charts

Paper chart coverage

Paper chart layout

Paper chart updates

Paper chart provision

- ENC usage?



BUNDESAMT FÜR
SEESCHIFFFAHRT
UND
HYDROGRAPHIE

ENC as source to print back-up charts

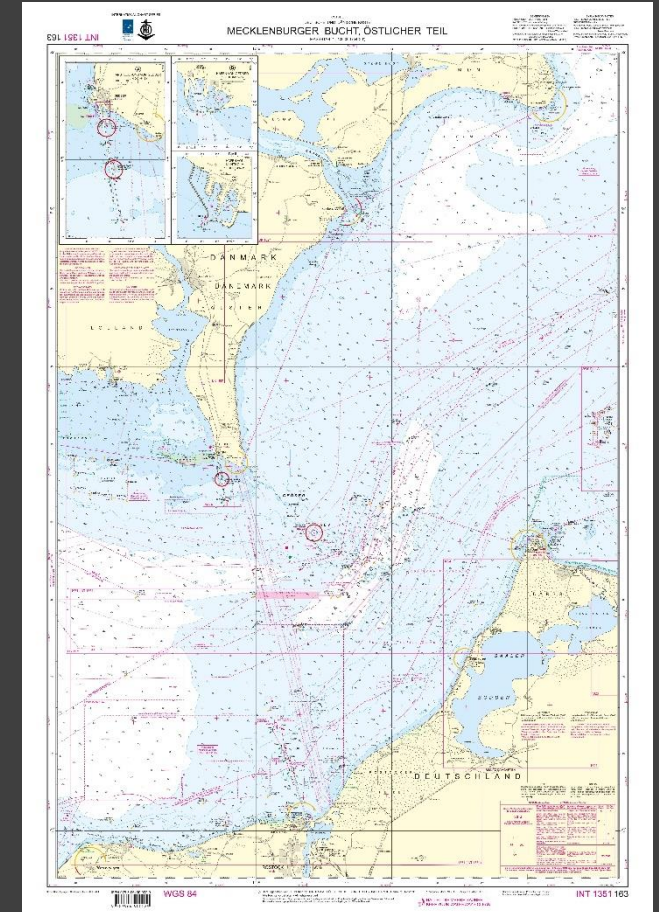
Paper chart coverage

Paper chart layout

Paper chart updates

Paper chart provision

- ENC usage





BUNDESAMT FÜR
SEESCHIFFFAHRT
UND
HYDROGRAPHIE

ENC as source to print back-up charts

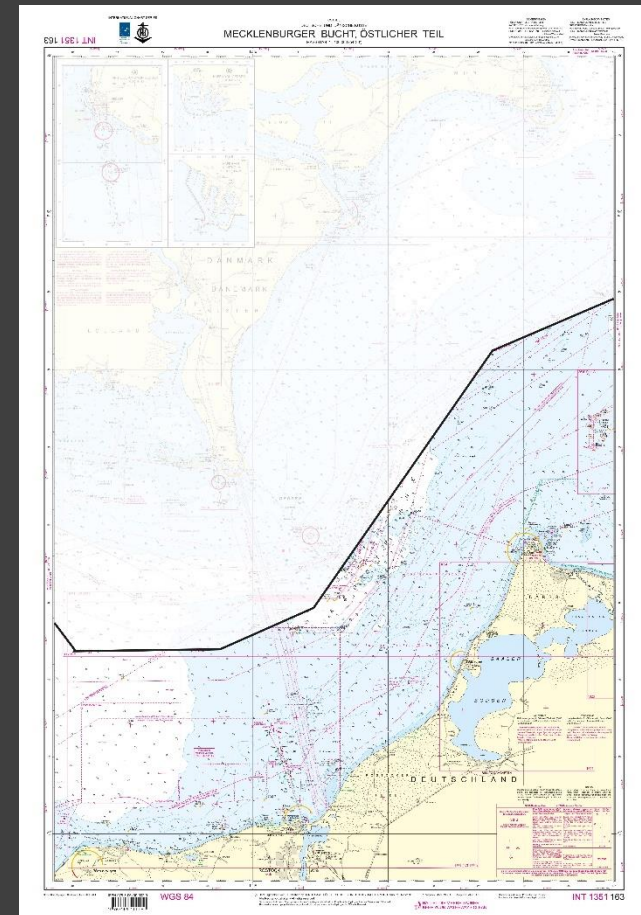
Paper chart coverage

Paper chart layout

Paper chart updates

Paper chart provision

- ENC usage



ENC as source to print back-up charts



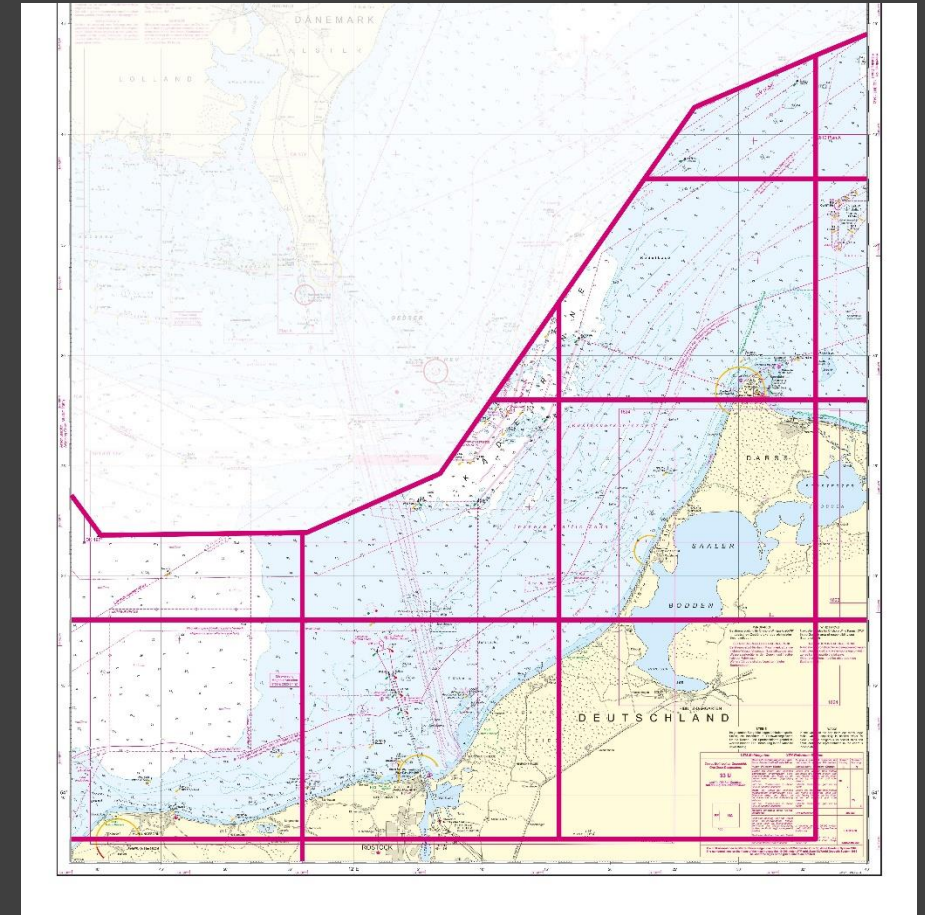
BUNDESAMT FÜR
SEESCHIFFFAHRT
UND
HYDROGRAPHIE

Paper chart coverage

Paper chart layout

Paper chart updates

Paper chart provision





BUNDESAMT FÜR
SEESCHIFFFAHRT
UND
HYDROGRAPHIE

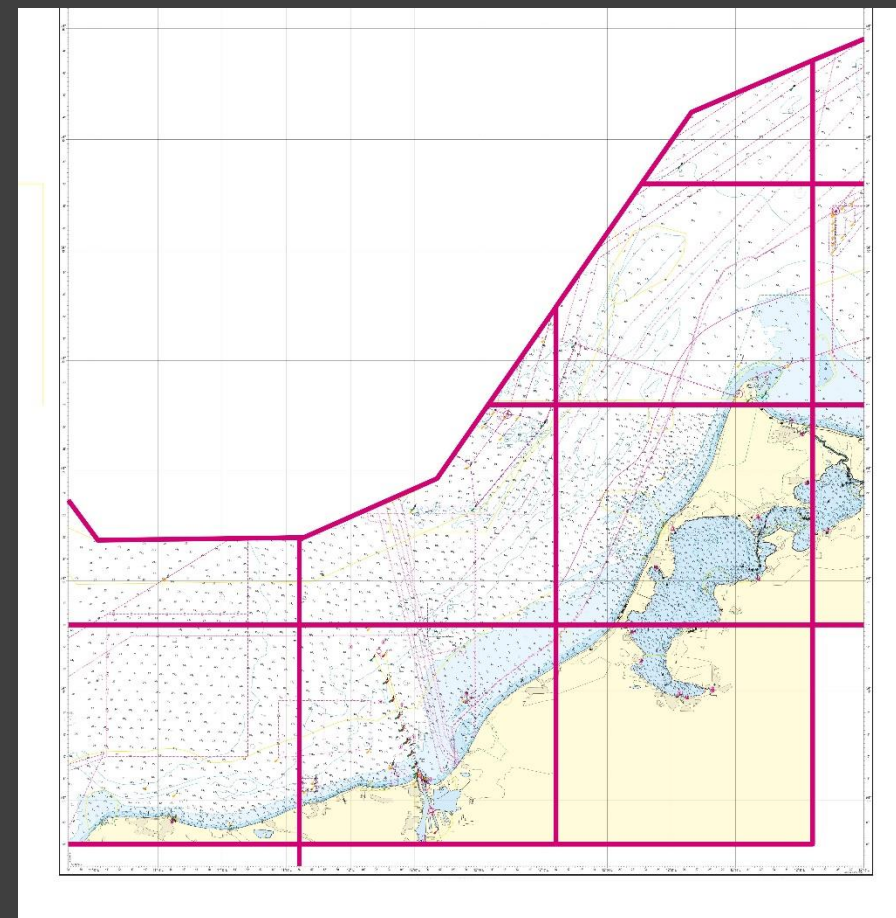
ENC as source to print back-up charts

Paper chart coverage

Paper chart layout

Paper chart updates

Paper chart provision





BUNDESAMT FÜR
SEESCHIFFFAHRT
UND
HYDROGRAPHIE

ENC as source to print back-up charts

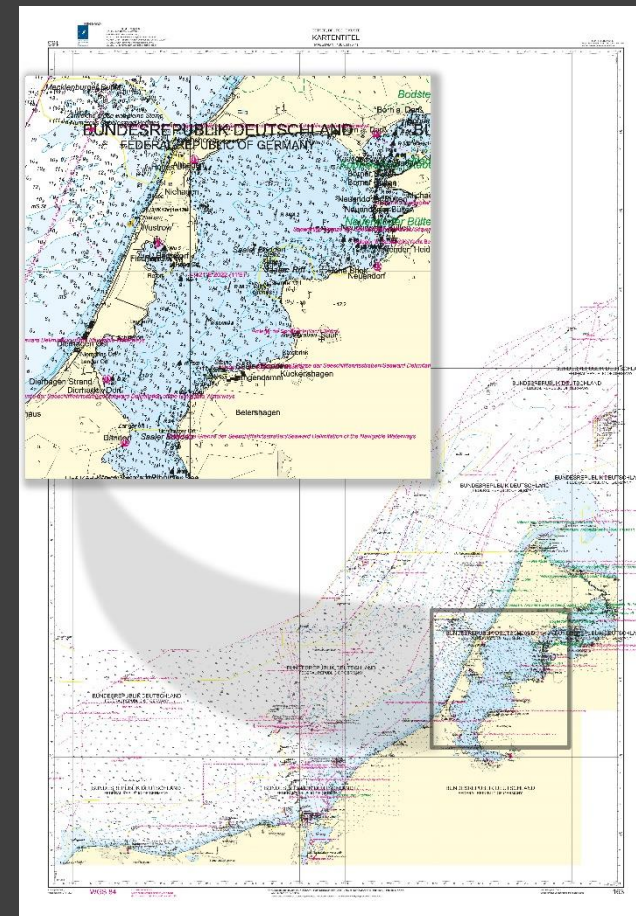
Paper chart coverage

Paper chart layout

Paper chart updates

Paper chart provision

- Use S-4





ENC as source to print back-up charts

Paper chart coverage

Paper chart layout

Paper chart updates

Paper chart provision


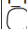
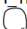
• Chart update procedure

NtM - Test DE

Header data

languageISO639-3 / countryISO3166-1 / producingAgencyS62	EN / DE / 180
creationDate	2018-10-12

Notices

NW-lich Wremer Loch. Bremerhaven. Blexen-Reede										
No	chartcorrectionAction	symbolMRN fileLocator	symbolText	correctionInstruction	symbolMRN fileLocator	symbolText	correctionInstruction	positions	charts	
3	Insert	I Tiefe_10  http://linchart00.bah.de/ntmxml/symbols/svg/I_Tiefe_10.svg	9,8m					positionDescription: latitudeDecimal/longitudeDecimal: 53.85333333/8.16 latitudeDegrees/latitudeMinutes: 53° 51.2' longitudeDegrees/longitudeMinutes: 8° 9.6'	INT: 1457 Nr.: 4 Titel: Die Weser von Robbenplate bis Brake Panel: <ul style="list-style-type: none">• main panel	
4	Replace	I Tiefe_10  http://linchart00.bah.de/ntmxml/symbols/svg/I_Tiefe_10.svg		by	I Tiefe_8  http://linchart00.bah.de/ntmxml/symbols/svg/I_Tiefe_8.svg		close by	positionDescription: latitudeDecimal/longitudeDecimal: 53.84166667/8.19 latitudeDegrees/latitudeMinutes: 53° 50.5' longitudeDegrees/longitudeMinutes: 8° 11.4'	INT: 1457 Nr.: 4 Titel: Die Weser von Robbenplate bis Brake Panel: <ul style="list-style-type: none">• main panel• Plan B	

Source data: 41 / 2018 / Normal
2018-10-12 / Published - WSA Bremerhaven Peilplan 69273

ENC as source to print back-up charts

Paper chart coverage

Paper chart layout

Paper chart updates

Paper chart provision

- Current methods using existing distribution ways
- Providing PoD without appropriate update service is challenging
- On board printing results in additional legal framework settings by IMO



UNDESAMT FÜR
SCHIFFFAHRT
UND
HYDROGRAPHIE

A Ship is SAFE in harbour but ...

***That's not what
SHIPS are built for.***

William H Shedd

